



studyoptions
Study in Australia or New Zealand

Guide to graduate entry medicine in Australia and New Zealand (S1 2027)

Introduction

Welcome to Study Options' Guide to graduate entry medical degrees in Australia and New Zealand. This aims to showcase the different programmes available and to offer advice on how to choose which medical schools you are best suited to apply to.

Once you've read this Guide, please book an online or phone appointment with **Sarah at Study Options**. Sarah oversees all medical school applications at Study Options and has been advising students on applying to Australian and New Zealand medical schools for over 20 years.

Sarah can guide you on which courses and universities might suit you best – and advise where your applications are potentially more likely to be successful. After you confirm your university shortlist, Sarah will send you the required application forms and a full guide to putting your applications together. Applications should be lodged with Study Options via email. They will be checked to ensure everything is complete and correct – and as strong as possible – before being uploaded directly to the Australian and New Zealand university medical school admissions teams for assessment.

Study Options is a free service for students. It is funded by Australian and New Zealand universities to help students through the application process on their behalf. In addition to course advice and application processing, Study Options provides full pre-departure support, including getting student accommodation, organising health and travel insurance, and applying for a student visa. For more information about Study Options and how we can help you, please visit www.studyoptions.com

Sarah Nash, Study Options
Head of medical applications
✉ sarah@studyoptions.com

studyoptions
Study in Australia or New Zealand

Please note that the information in this Guide is intended for international applicants to medical programmes in Australia and New Zealand. An international student is defined as anyone who does not hold citizenship or permanent residency of Australia or New Zealand.

Contents

- 3 Choosing where to apply**
- 5 How and when to apply**
- 6 Medical degree listings**
- 8 The University of Queensland**
- 12 University of Melbourne**
- 14 University of Auckland**
- 18 Monash University**
- 20 Professional progression as a medic in Australia or New Zealand**

Creating an application shortlist



This guide provides details of the graduate entry medicine programmes available. So how can you decide which medical schools to apply for? Here are a few factors to consider

Content and structure of the course

Check the details of each course in this guide carefully. Each will offer different approaches, different emphases, different opportunities. Check the details and ask yourself which are most likely to suit you and your style of learning best.

Please note, however, that all the courses featured in this guide lead to the same professional outcome. All are clinical qualifying courses, fully accredited by the Australian and New Zealand Medical Councils and leading to professional registration as a doctor in Australia or New Zealand. Successful graduates will progress to the first of two compulsory internship years required to gain full registration as a doctor, the first step in a medical career.

The number of places available

For some students this is a practical – or strategic – consideration when applying. For others, it is a question of preference in terms of the environment they prefer to learn in. Would you feel more comfortable somewhere everyone knows your name, or as part of a large student cohort in a bigger, more bustling medical school? The number of places available to international applicants at each medical school is clearly marked on the programme information.

Location: Where do you want to study?

Graduate entry medicine requires you to complete a series of clinical placements. What sort of environment do you want to be in as a student doctor? Are you drawn to bustling cities, or would you prefer to be somewhere smaller and calmer, with perhaps more opportunities to undertake rural placements? Bear in mind that the professional contacts you make during your studies could play a key role in the progression of your career further down the track.

Medicine is a demanding degree and it is important for you to be in a location that allows you to create a healthy work/life balance. Going to university, after all, is not just about studying. So please factor the broader university



environment, and location, into your decision-making. You can get more information about the different universities, their locations and the student lifestyles they potentially offer [here](#)

International accreditation

Please check that your chosen Australian or New Zealand medical degree will be recognised in the country, or countries, that you wish to work in as a doctor in the future. It is your responsibility as the applicant to check this. If you want to work in the UK, for example, this is relatively straightforward. The UK General Medical Council has introduced the Medical Licensing Assessment (MLA) which aims to test the core knowledge, skills and behaviours needed to practice safely in the UK. Graduates of international medical schools must take the PLAB test (which is MLA compliant) when they apply for registration with a licence to practice in the UK. The MLA test also applies to students at UK medical schools – as of 2024/2025 graduates must pass the MLA as part of their medical degree before they can join the UK medical register. Please click [here](#) for more information. Many Australian and New Zealand medical degrees are also recognized in other countries, including Singapore, Hong Kong, Canada and Malaysia. Please check individual

university degree descriptions to get specific details of their accreditations.

Study costs

Anyone who is not a citizen or permanent resident of Australia or New Zealand is classed as an international student and required to pay international tuition fees. For graduate medicine, these range from around £40,000 to £60,000 per year. It is unusual for universities to offer international students scholarships to study medicine, so fees need to be privately funded.

Note that different universities charge different tuition fees so there is no consistency in tuition costs. Please check fee information carefully and factor it in when deciding where to apply.

Entry requirements

You can only apply for programmes that you meet entry criteria for. Applications are assessed against three factors:

- Academic achievement (usually expressed as Grade Point Average, or GPA)
- Aptitude test results (usually)
- Interview

See individual programme details in this guide



for university-specific entry requirements.

Notes: Academic requirements

- The GPA stated is the minimum requirement – the lowest score possible to be considered for a place. Achieving the GPA stated does not mean that you're guaranteed a place, it just means that your application is eligible to be considered.
- GPA is usually calculated from your bachelors (undergraduate) degree. Some universities include complete postgraduate qualifications in their GPA calculations, but not all. The minimum GPA standard is 5 on the 7-point scale, but some Australian and New Zealand universities set higher GPA requirements.
- Not all the universities require your previous academic qualifications to be in a relevant academic discipline, such as biomedical or health sciences. Several Australian universities are happy to accept graduate medicine applications from candidates from any academic background. Check requirements on each programme's details carefully. If compulsory subject pre-requisites apply, this will be clearly stated in the details here.
- If your GPA is below the minimum required, you are not eligible to apply. There are no exceptions to this rule.

- If you would like to check your GPA, please contact Sarah at Study Options for advice and an approximate GPA calculation.

Notes: Aptitude tests

- Admission to almost all graduate entry medicine degrees in Australia and New Zealand requires an aptitude test score.
- Two tests are accepted – the GAMSAT and the MCAT (see details right). No preference is given; it is the student's choice which result they submit. As with GPA, there are minimum standards. You must score at least 50 in each section of the GAMSAT, or 125 in each section of the MCAT, in order to be eligible to apply. If your test results are lower than the minimum set, they are inadmissible and you'll need to take another test in order to apply.
- It is not unusual to not get the aptitude test result you want the first time you take it! When planning applications try to allow time to have to retake your chosen aptitude test, just in case. Sarah at Study Options can create a plan and timeline for you to work to.

Interviews

Applicants whose GPA and aptitude test results meet required standards will be invited to interview. MMI is the usual format.

The aptitude tests for graduate medicine: GAMSAT and MCAT

GAMSAT

(<https://gamsat.acer.org>)

- Two test dates per year in the UK, in March and September
- There is no limit to how many times someone can take this test
- Results take around two months to be issued
- GAMSAT is designed to assess skills in critical thinking, writing and general problem-solving
- It is divided into three sections:
 - Written Communication – two essay questions
 - Humanities and Social Sciences – multiple choice questions
 - Biological and Physical Sciences – multiple choice questions.

MCAT

(<https://students-residents.aamc.org/register-mcat-exam/register-mcat-exam>)

- There are frequent MCAT tests available, with dates offered from January through to September each year at locations all over the world, including in the UK
- MCAT can be taken up to three times in a single testing year; up to four times across two years or up to seven times in a lifetime
- Results are issued 30-35 days after an exam date
- The MCAT is a multiple choice exam designed to assess problem-solving, critical thinking and knowledge of natural, behavioural, and social science concepts and principles prerequisite to the study of medicine
- The test is divided into four sections:
 - Biological and biochemical foundations of living systems
 - Psychological, social and biological foundations of behaviour
 - Chemical and physical foundations of biological systems
 - Critical analysis and reasoning skills.

How and when to apply

When to apply

Graduate entry medicine courses have one intake per year, in February (semester 1). Applications generally open in March the year before (so March 2026 for February 2027).

We recommend you aim to lodge applications with Study Options by April the year before you want to start (depending on your chosen universities) but start researching your options from around 18 months out. To discuss timelines or to ask any questions, please contact Sarah at sarah@studyoptions.com or call 0117 911 5610.

You can apply if you have already completed your key degree, or if you are a current final year student.

Application deadlines are set individually by each university. Please see the course details for confirmation of each deadline. The earliest falls in late April, the latest in October. Many deadlines fall around the end of June.

Some universities have one fixed deadline for applications, others conduct a number of assessment rounds. Where the latter applies, please aim to apply in the earliest round possible. Competition for places only intensifies as the assessment rounds progress.

Please aim to take a GAMSAT or MCAT test before the assessment cycle begins if possible (for example, take GAMSAT in September 2026 if you are planning to apply for degrees starting in February 2028). This allows you time to retake your aptitude test, should it be required.

How to apply

Applications for medical degrees in Australia and New Zealand are made via Study Options if you are an international applicant. An international student is defined as someone who does not have citizenship or permanent residency of Australia or New Zealand.

Please confirm your shortlist of medical schools to Sarah at Study Options around 12 months before your chosen programmes start. She will then create an application plan and timetable for you to work to.

Contact sarah@studyoptions.com for application forms, or download them at www.studyoptions.com/how-apply/

Applicants are required to provide completed application forms, a personal statement and (where required) aptitude test results OR confirmation you have registered for the relevant aptitude test. You will also need to provide full undergraduate academic transcripts and a degree completion certificate (or up-to-date interim transcripts if you are still studying at the point of application).

There is no limit to the number of graduate medicine programmes you can apply for, but you can only apply to the courses that you meet published entry requirements for.

Please contact Sarah Nash at Study Options with any questions about the application process.

sarah@studyoptions.com
0117 911 5610

My application experience: Caleb Blichfeldt

Caleb started the Doctor of Medicine at the University of Queensland in February 2023

"I started the research process early, probably during the last term of my second year of my bachelors degree. I got a course list from Sarah and I went through it all, and then I then went away and came back to it, and found things that I had missed the first time around. So it's not a bad thing to be early! I think that if you researched six months ahead of application time you'd be fine, but anything between six months and a year would be good.

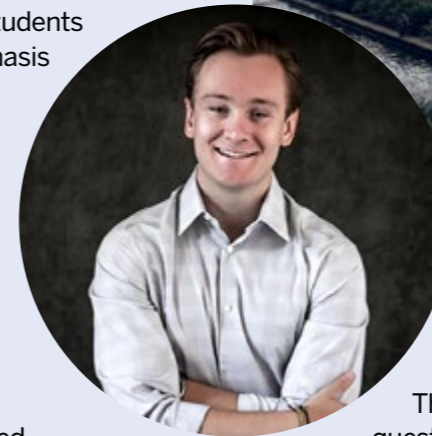
"I took GAMSAT in the September before my final year at uni. Taking it then meant I could start preparing at the end of my second year and working for it over that summer. If I had done it in the spring [the March sitting of GAMSAT] of third year, right before applying, then I would have had to do it during my final year work, which would have been a lot to manage. And that wouldn't have given me any time if I had needed to retake.

"The main tip I saw about the test was that knowing the core material is good, but practicing the exam is best. So I was slowly getting that information through second year, then in the summer I spent all my time revisiting the tough subjects and practicing. Certain tests want you to answer in a certain way, and if you can start picking out some of those patterns it really helps if you start running out of time because you can make some pretty accurate guesses, and maybe still pick up some marks where other students are just losing out.

"How did I choose which universities to apply to? I put a lot a lot of value on having a work life balance. I know med school is a lot of work, but I definitely ranked schools more highly if they looked like they offered a balance. Places like UQ and Deakin, for example, put a lot of emphasis on sports, and Queensland posted about some of their graduating students and put a lot of emphasis on what they did outside of class and how they were known outside of class, and I thought that was pretty cool because I think you need that to stay sane!

"So that's how I ranked schools initially, before I got into the details of the programmes themselves. Some schools do a lot of research, or they have a focus on academic study initially, for example a period of study before you get into a hospital setting. Personally, I learn best by just being in an environment and practicing and so I looked for courses that put you into a clinical setting as early as possible and which I felt focused on learning by doing and real-world experience.

"The interviews I did were all MMI, done online via Zoom. There were around five or six scenario questions which were really interesting. The main thing is to have fun with it – try to relax, try to



put yourself in the situation, and to think creatively. You will do better for it.

There were also questions that were more aimed at me as a candidate. One – which I think is a classic question and I'd expected – was what do you do in your free time? How do you take a break from studying? I was able to talk about sports and so on. They also want to know about what you do when you don't have time for sports, so you could talk about catching up with friends, meditating, taking a walk, people say all sorts. One of the textbooks I'd seen discussing this talked about thinking outside the box, rather than just listing activities, and I did remember to talk a little about time management. Which doesn't sound like something to say when someone asks what would keep you sane, but if you manage your time properly you study more efficiently and

you are more likely to have time for your activities.

"Looking back on the whole application experience I am really glad I did everything so early. Early is better! It means you have to do a smaller and more manageable amount each day, whether it's preparing for the GAMSAT, looking at schools, preparing for interviews – all of it.

"The second lesson I took was how key it is to practice and prepare. You can't know what someone will ask you at interview, but you know that they are somehow going to ask about you, they are going to ask what you know about the course, they are going to ask ethical questions – if you have examples from your life that you can easily call to mind to demonstrate how you know that, or how you are good at that, then you can answer anything, up to a point. Get those general ideas down before you go in!"

Medical degrees at a glance



The University of Queensland, Brisbane
(www.uq.edu.au)

Doctor of Medicine

Annual tuition fees: Approximately A\$109,500

Course duration: 4 years

Entry requirements:

- A 'key' degree with a minimum GPA of 5 on a 7 point scale. This degree can be a bachelors, masters or PhD. It can be in any academic discipline, but must have been completed in the last 10 years. Postgraduate qualifications must be complete by the application deadline in order to be included in a GPA assessment
- Meet two pre-requisite subjects: Integrative Cell and Tissue Biology and Systems Physiology. Please note it is possible to meet these via online study with UQ if you have not covered them within a previous qualification
- A minimum score of 50 in each section of the GAMSAT test or a minimum of 504 in the MCAT (each individual MCAT section must be scored at 125 or higher)
- MMI interview

Application deadline: 5 June 2026 (Round 1) 7 August 2026 (Round 2) BOTH DATES TBC

Number of places for international students: Approximately 90 per year (of 450 in total).



University of Western Australia, Perth
(www.uwa.edu.au)

Doctor of Medicine

Annual tuition fees: \$93,000 per year

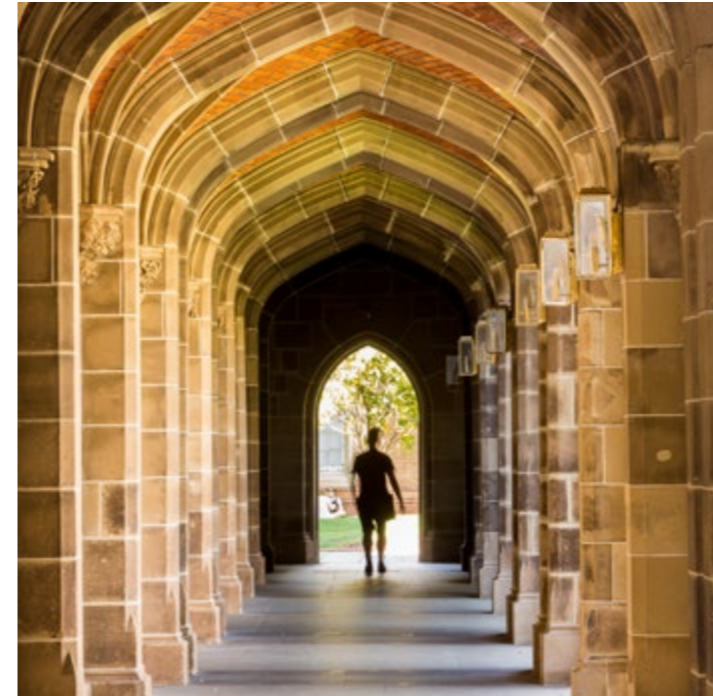
Course duration: 4 years

Entry requirements:

- An undergraduate degree with a minimum selection GPA of 5.5 on a 7 point scale. Academic results from postgraduate study will also be taken into account when calculating GPA (incomplete postgraduate coursework study undertaken in the 3 most recent years will be included in the selection GPA calculation. Research-based degrees are included in the calculation only when they have been completed).
- A minimum score of 55 with no section less than 50 in the GAMSAT test OR minimum overall score of 500 in the MCAT with no section score below 124
- Interview

Application deadline: Main round April 30 2026; second round June 30 2026

Number of places for international students: Between 20-25 per year.



The University of Melbourne, Melbourne
(www.unimelb.edu.au)

Doctor of Medicine

Annual tuition fees: Approximate A\$123,000

Course duration: 4 years

Entry requirements:

- An undergraduate degree in any discipline that has been completed within 10 years of January 1 of the year in which you intend to commence the Doctor of Medicine. There are no pre-requisite study requirements
- GAMSAT (minimum score of 50 in each section) or MCAT (minimum overall 492)
- MMI interview

Application deadline: June 12 2026. All supporting documents must be submitted by 17 July 2025. Interview invitations are issued in late August; offers are released from mid-October

Number of places for international students: Around 60 per year (out of a total cohort of 355).



The University of Sydney, Sydney
(www.usyd.edu.au)

Doctor of Medicine

Annual tuition fees: \$93,500

Course duration: 4 years

Entry requirements:

- An undergraduate degree in any academic discipline with a minimum GPA of 5 on the 7 point scale. The degree must have been completed in the last 10 years
- GAMSAT (minimum score of 50 in each section and 50 overall) or MCAT test (minimum score of 500 overall)
- MMI interview

Application deadline: June 18, 2026. All supporting/outstanding documents must be submitted by 29 July 2026

Number of places for international students: Approximately 80 (of 320 total).

Medical degrees at a glance



Monash University, Melbourne (www.monash.edu.au)

Doctor of Medicine

Annual tuition fees: Approximately A\$102,000

Course duration: 4 years

Entry requirements:

- An undergraduate degree in a relevant field such as biomedical science, pharmacy or science. Your bachelors degree should include significant and broad biomedical science content. You must have a minimum GPA of 6 on a 7 point scale
- International applicants are NOT required to undertake the MCAT or GAMSAT
- Interview

Application deadline: 30 June 2026

Number of places for international students:

Approximately 30 per year (of around 100 students total).



Griffith University, Gold Coast (www.griffith.edu.au)

Doctor of Medicine

Annual tuition fees: Approximately A\$84,500

Course duration: 4 years

Entry requirements:

- An key degree with a minimum GPA of 5 on a 7 point scale. Your key degree can be a bachelors, masters (by research or by coursework) or PhD and can be in any academic discipline
- A minimum score of 50 in each section of the GAMSAT test or at least 123 in each section of the MCAT
- Interview

Application deadline: July 31, 2026

Number of places for international students: Varies.



ANU, Canberra (www.anu.edu.au)

Doctor of Medicine and Surgery

Annual tuition fees: \$100,000

Course duration: 4 years

Entry requirements:

- An undergraduate degree in with a minimum GPA of 5 on the 7 point scale. Postgraduate study may be considered as part of admission when ranking applicants for interview.
- A minimum score of 50 in the GAMSAT overall with a minimum of 50 in each section, OR at least 125 in each section of the MCAT
- Interview

Application deadline: June 30 2026 TBC

Number of places for international students: Varies.

Approximately 110 places available for students each year overall.



The University of Auckland, Auckland (www.auckland.ac.nz)

Bachelor of Medicine and Bachelor of Surgery (graduate entry)

Annual tuition fees: NZ\$86,500

Course duration: 5 years (Auckland accepts applications from graduates to join its MBBS degree, rather than offering a Doctor of Medicine. This is therefore a 5 year course and the final qualification is a bachelors degree)

Entry requirements:

- Bachelor degree in relevant subject with a minimum cumulative GPA of 6 on a 9-point scale. This degree must have been completed on a full time basis from a recognised university. Your last year of full time study must be no more than five years prior to the year of application
- Aptitude test results are NOT required
- Interview

Application deadline: 1 July 2026

Number of places for international students: 30 per year (out of around 287 places each year overall).

The University of Queensland

Doctor of Medicine

When you study medicine with the University of Queensland (UQ), you become part of an outstanding medical community. You will gain a world-class, hands-on education that enables you to become an exceptional doctor, capable of working in any global setting. Our Doctor of Medicine (MD) programme allows you to tailor your learning and develop the skills you need to advance the health and well-being of all.

Why UQ?

Our vision is to nurture and educate future medical graduates who are clinically capable, team players, kind and compassionate, serve responsibly and are dedicated to the continual improvement of the health of people and communities in Queensland, Australia and across the globe. Our innovative curriculum is therefore built around six key themes: Safe and Effective Clinician; Critical Thinker, Scientist and Scholar; Advocate for Health Improvement; Dynamic Learner and Educator; Kind and Compassionate Professional; Partner and Team Player.

The four-year MD programme has been designed to capture and build on the enthusiasm, maturity and diversity of our students. Each year, UQ welcomes more than 90 international students to our programme from a wide range of countries including Canada, Hong Kong, Singapore, the UK and the US. As an international student, you will bring new ideas, creativity and experiences to our classrooms both on campus and in clinical units.

How will I learn?

Your medical journey will begin in Year 1 with the foundations of medicine. You will learn the fundamental concepts of medical sciences, clinical and professional skills, and the role of the doctor of the health system. You will also join a geographically-based 'learning community' that will bring together different clinical partners and provide a home for early, meaningful clinical experiences. You will be able to build your own unique medical degree through a range of student choices and exciting enrichment opportunities.

Year 2 will concentrate on developing the knowledge and skills required for medical practice, with a focus on the pathophysiology of common conditions. Around half of your learning opportunities will be in clinical settings.

From Year 3 onwards, you will be immersed in various clinical environments, both in hospital and the community. Your learning will be grounded in the clinical 'workplace' setting, supported by structured teaching and learning activities on campus and beyond.

Your clinical immersion will culminate in a 'transition to practice semester' in Year 4, which will be focused on giving you the opportunity to be an active pre-intern member of a clinical team.

This will help you make the safe and effective transition to internship/residency and to your ongoing successful medical career.

Throughout the four years of the Doctor of Medicine programme, UQ will arrange all compulsory placements for you in a variety of healthcare settings and locations (including metropolitan, regional, rural and remote). You will belong to the Greater Brisbane Clinical School which consists of eight clinical units and a learning hub situated throughout Brisbane.

Teaching and research is supported by 3,800+ Academic Title Holders – these are hospital and clinic-based health professionals who supervise medical students, mentor junior doctors and take on hours of teaching and research activity in their own time to find better ways of treating patients. <https://medical-school.uq.edu.au/greater-brisbane-clinical-school>

Student support

Our goal is to enable all our medical students to reach their full potential and support and guidance is embedded as core throughout. Excellence in student support is central to our culture and curriculum. <https://medical-school.uq.edu.au/doctor-of-medicine-student-support>



Where will my UQ degree take me?

Our MD degree is primarily designed to enable you to work as a registered doctor and to undertake further training in any specialty of clinical practice. Our 15,000+ graduates make a difference to patients' lives in a wide variety of specialties such as emergency medicine, general practice, intensive care medicine, physician and surgery, across the geographic continuum from urban to remote communities.

The majority of our international medical graduates choose to remain in Australia for their medical training. Over the past four years, 86% have secured internships in Australia. For the rest of our graduates, many of them have returned to their home countries for residency/housemanship. For more information on graduate outcomes and destinations from 2018 to 2024 please see <https://medical-school.uq.edu.au/international-graduate-outcomes>

If you are interested in pursuing research, you can explore our Clinician-Scientist Track option, which allows you to incorporate a PhD or an MPhil into your MD degree. <https://medical-school.uq.edu.au/clinician-scientist-track-md-phd-and-md-mphil>

Other employment opportunities open to our graduates include careers in public health, medical administration, clinical research, international aid, medical education, medical insurance, journalism and many more.

Who will recognise my qualifications?

The University of Queensland MD programme is accredited by the Australian Medical Council and recognised by the Medical Board of Australia. It is also widely internationally recognised, enabling our graduates to practise in many countries. Our Medical School can assist with graduate certification requirements around the world, including the US National Resident Matching Program (NRMP) and the Canadian Resident Matching Service (CaRMS).

How to apply

Applications should be made through Study Options, the University of Queensland's representative in the UK. Please contact [Sarah Nash at Study Options](#) to discuss and plan your application.

Applications should be emailed to: sarah@studyoptions.com

Study Option is a free application and advice service for students applying to Australian and New Zealand medical schools. Study Options is funded by universities in Australia and New Zealand to provide support with the application process on their behalf.

Entry requirements:

- **Applications for the 2027 intake close June 5 (Round 1) and August 7 (Round 2) 2026**
- **In order to be considered for entry, applicants:**
 - Must have completed a bachelor's degree (known as a key degree) with a minimum grade point average (GPA) of 5 on a 7-point scale, or you must be in your final year of completing this degree, and:
 - You must have obtained a valid minimum score of 50 in each section of the Graduate Medical School Admissions Test (GAMSAT) or a valid minimum score of 504 in the Medical College Admission Test (MCAT) and:
 - Prior to commencing the MD at UQ, you must have successfully completed two subject prerequisites or equivalent prior studies in cell biology and systems physiology. As a supportive measure for all future medical students, we also recommend that you aim to undertake courses in biostatistics, anatomy and a humanities subject during your undergraduate degree.
- Perform satisfactorily in a Multiple Mini Interview (MMI). Invitations to interview are based on the ranking of GPA and GAMSAT/MCAT score and the availability of interview places.
- **Costs:** The indicative annual programme fee for 2027 is AUD\$109,500; total fees for the programme are approximately A\$440,000. Fees are reviewed each year and may increase. Please note that you are also expected to pay for your own first aid certificate, criminal history checks, testing and immunisations, and travel and living expenses associated with placements.



The University of Melbourne

Doctor of Medicine

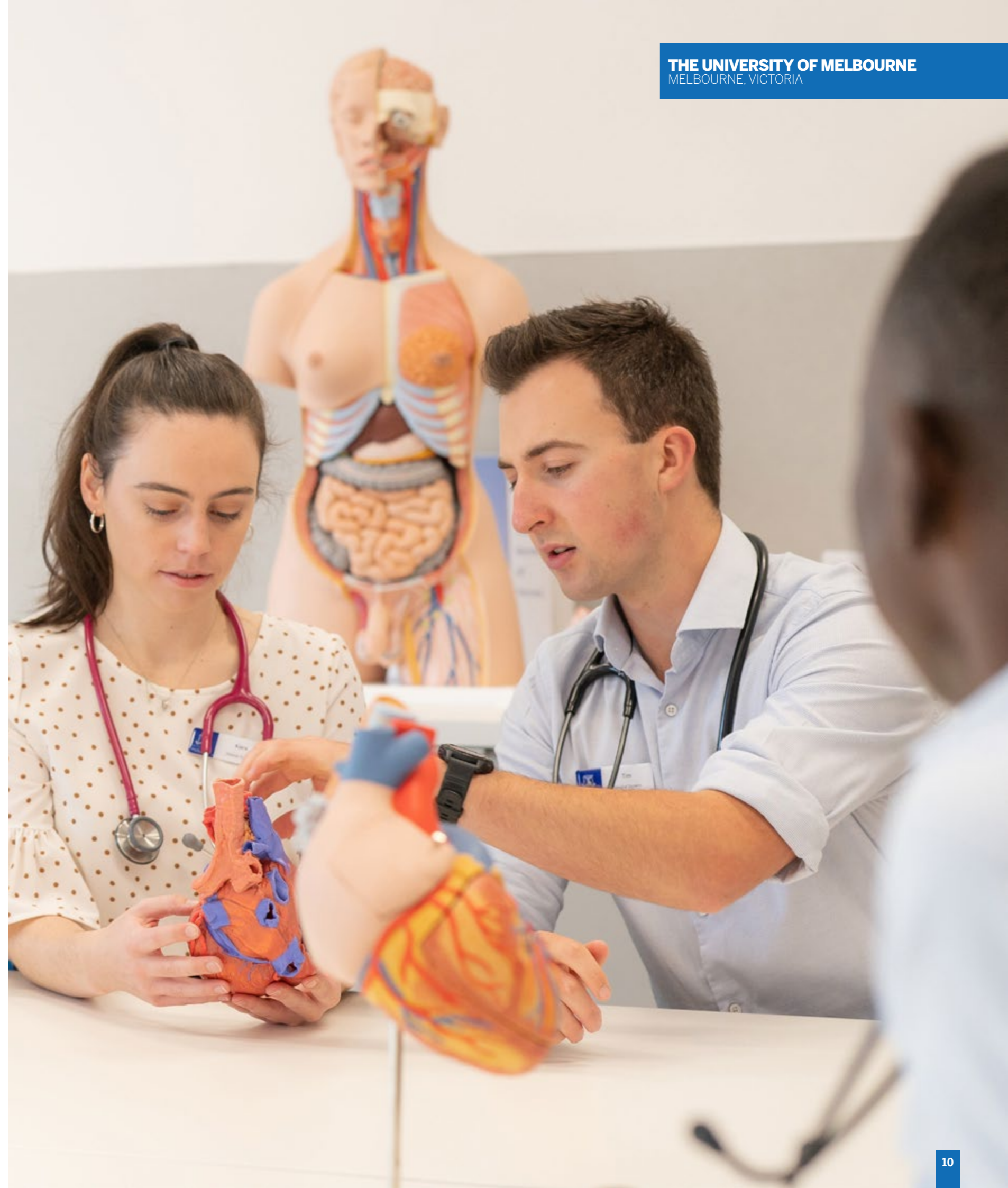
At Melbourne University, we have been teaching medicine for over 160 years. It was the first medical school in Australia and the first to teach the degree at a masters level as the Doctor of Medicine. Based on its experience in medical education, the Melbourne School has developed a curriculum that is both contemporary and bold. As a student in the Doctor of Medicine (MD) programme, you'll learn from award-winning teachers, researchers and clinicians while studying in the largest biomedical precinct in the southern hemisphere.



One constant piece of feedback from our students is that our teachers, researchers and clinicians are passionate about delivering a curriculum that will challenge you to think in new ways and prepare you for a rewarding career. On top of becoming part of a rich learning community in the clinical schools and departments located in our numerous affiliated hospitals in metropolitan Melbourne, you will be equipped with fundamental skills in critical thinking, problem-solving and the analysis of evidence and communication.

The recently redesigned course aims to produce high quality medical professionals who can thrive in complex environments and be the leaders of change. It delivers advanced clinical and academic training to ensure students are prepared for the challenges of internship and an increasingly diverse medical career. With an emphasis on choice and customisation, the Melbourne MD allows students to build their own future.

As one of the world's premier medical and research institutions, the Melbourne Medical School has strong partnerships with outstanding hospitals in the public and private sectors as well as some of Australia's leading medical research institutes. Exciting new developments in the fields of cancer, neuroscience and infectious diseases will enrich the research experiences of our students.



MD1	Foundations for Clinical Practice (FCP) 81.25 CP INTERGRATED RESEARCH TRAINING	Discovery 1 Foundation 12.5 CP	Student Conference 6.25 CP
MD2	Principles of Clinical Practice 2 (PCP2) 81.25 CP INTERGRATED RESEARCH TRAINING	Discovery 2 Application 12.5 CP	Student Conference 6.25 CP
MD3	Principles of Clinical Practice 3 (PCP3) 81.25 CP INTERGRATED RESEARCH TRAINING	Discovery 3 Intergration 12.5 CP	Student Conference 6.25 CP
MD4	Transition to Practice (TTP) 43.75 CP INTERGRATED RESEARCH TRAINING	Discovery 4 Creation 50 CP INTERGRATED RESEARCH PROJECT	Student Conference 6.25 CP

Course structure

The Melbourne Doctor of Medicine is a four year full-time course comprising:

- One year of integrated bioscience and clinical learning featuring innovative case-based teaching
- Two core clinical training years which facilitate learning with patients in a wide range of settings
- Discovery subjects, which provide students the flexibility to explore areas of particular interest
- Option to do an immersive research experience in an area of interest
- A capstone semester in which you will 'rehearse' the skills required for effective and safe clinical practice
- An annual medical conference, which offers students opportunities to interact with leaders in research, policy and clinical healthcare.

Key new features: Flexible pathways and discovery subjects

Flexible pathways

The redesigned Doctor of Medicine (MD) provides flexible pathways for you to meet the course core research learning outcomes and includes the option to extend skills and scholarship by choosing either the Research Scholar pathway or the Clinical Scholar pathway. Each will broaden your skillset, either in research skills and leadership (research scholar pathway) or in clinical advocacy and leadership (clinical scholar pathway). Both offer learning activities, projects and assessment tailored to meet and go beyond the course learning outcomes in your chosen area of interest. During your second year, you will consider which pathway best meets your interests and career goals and choose one of the two options. You will be supported in this decision-making process by our experienced team of course advisors.

Discovery subjects will enable you to look deeper into an area aligned with the core curriculum that has picqued your curiosity:

- In year 1 of discovery, you'll lay the foundation of knowledge and understanding (Discovery 1 – Foundation)
- In year 2, you'll be applying your learning to the clinical setting (Discovery 2 – Application)
- In year 3, you'll be integrating multiple concepts into your practice of medicine (Discovery 3 – Integration OR Discovery 3 – Research Scholar)

- In year 4, your discovery subject culminates in using what you've learned to create something new (Discovery 4 Clinical Scholar OR Discovery 4 – Research Scholar)

Clinical electives: You will also have the option of undertaking a clinical elective of at least one week duration during any non-teaching period.

An internationally recognised qualification

Graduates of the Doctor of Medicine at the University of Melbourne leave with an internationally recognised qualification, ensuring quick acceptance to practice in many other countries. Those graduates who choose to practice in countries requiring extra accreditation often report excellent pass rates.

Further information and resources:

- For prospective students, student profiles, webinar recordings: <https://mdhs.unimelb.edu.au/study/meet-us>
- Resources for when you become a student: <https://medicine.unimelb.edu.au/study/current-student-resources>
- Internships, working as a medical practitioner in Australia and specialist training in Australia: <https://medicine.unimelb.edu.au/study/current-student-resources/md-students-resources/internships>
- Information about clinical schools: <https://medicine.unimelb.edu.au/study/current-student-resources/md-students-resources/clinical-schools>



Entry requirements:

- **Applications for the 2027 intake close on 12 June 2026. In order to be considered for entry, applicants:**
 - **Must also have completed:**
 - The Graduate Australian Medical Schools Admission Test (GAMSAT); OR
 - For international candidates who are located overseas when they apply only, either the GAMSAT or the North American Medical Colleges Admission Test (MCAT);
 - **Must perform satisfactorily at a Multi-Mini interview.** MMIs will be held in September 2026. Satisfactory performance at the interview is required to demonstrate adequate communication skills.
- Meeting the requirements does not guarantee selection into the programme.
- **Costs:** Annual tuition fee is A\$123,000; total fees approximately A\$500,000.

How to apply

Applications should be made through Study Options, Melbourne's representative in the UK. Contact **Sarah Nash** to discuss and plan your application.

Send applications to: sarah@studyoptions.com

Study Option is a free application and advice service for students applying to Australian and New Zealand medical schools. Study Options is funded by the universities to provide application support on their behalf.

The University of Auckland

Bachelor of Medicine and Bachelor of Surgery (Graduate Entry)

Start your story at the University of Auckland, Waipapa Taumatu Rau.

As New Zealand's premier¹ University, the University of Auckland is ranked in the top 100 universities worldwide² and located in Auckland, New Zealand's largest city and commercial epicentre.

A diverse and vibrant multicultural hub, which consistently ranks as one of the most liveable cities in the world, Auckland is an inspiring place for you to undertake your international student experience.

The University of Auckland's Faculty of Medical and Health Sciences, Māturanga Hauora, is located at the modern Grafton Campus, in the heart of the Auckland city and across the road from the beautiful Auckland Domain and Auckland City Hospital.

Since its beginnings in 1968, the Faculty has become internationally recognised as a comprehensive medical and health sciences faculty. Within the Faculty, the School of Medicine offers the Bachelor of Medicine and Bachelor of Surgery (MBChB), providing you with exceptional opportunities to gain the medical knowledge, clinical experience and research skills needed to pursue a vocation in any field of medicine.

As a student at the Faculty, you'll be taught by lecturers and researchers at the top of their fields, learn in world-class training facilities and make life-long connections with fellow students.

Research strengths

Our faculty is considered the largest biomedical research faculty in New Zealand, with a proud history of attracting and growing pre-eminent researchers, talented students and generating high levels of research funding. We are committed to improving the health of our local, national and global communities through excellence in research. Our students learn in a research-rich environment and generate a significant proportion of the research drive and outputs of the Faculty and of the wider University. We host four transdisciplinary University Research Centres, a Centre for Research Excellence and numerous Faculty Research Centres.

¹Quacquarelli Symonds (QS) World University Rankings 2025

²Quacquarelli Symonds (QS) World University Rankings 2025

The Bachelor of Medicine and Bachelor of Surgery

Course structure – graduate entry

The MBChB offers you a rewarding, challenging and exciting pathway to a career in medicine. For international graduate students, you will enter into year two of the programme.

As a medical student, you will gain invaluable exposure to diverse clinical environments and acquire hands-on experience at New Zealand's largest teaching hospital, which will effectively



prepare you for your professional future in the field of medicine and empower you to shape the future of healthcare.

As a graduate, you'll enter the Auckland MBChB programme from Year Two (Part II).

- **In Year Two (Part II)** you are required to complete a core course that focuses on the basic medical and health sciences while being introduced to professional and clinical aspects of medical practice (120 credit points).
- **In Year Three (Part III)** you will complete two core courses: Medical Humanities and a course focusing on human health and illness (120 points).
- **In Years Four (Part IV), Five (Part V) and Six (Part VI)** you will learn predominantly in hospital and community environments, with rotating study in a number of disciplines for 38-44 weeks of the year (120 points in each clinical year).
- Students in all three clinical years (4, 5 and 6) have the opportunity to study in either the Auckland metropolitan area, regional centres in the North Island of New Zealand and surrounding rural areas. All students are required to spend one clinical year outside of Auckland.
- **In Year Five (Part V)** all students have the opportunity to complete a five-week period of selective study and, in Year Six (Part VI), an eight-week research project or elective, which you are encouraged to undertake either in New Zealand or overseas.

All five years of the programme must be successfully passed in their entirety before

you are permitted to graduate with the degree of Bachelor of Medicine and Bachelor of Surgery (MBChB).

Where can this programme take you?

An internationally recognised qualification
Students who successfully complete the medical programme are eligible to apply for provisional registration with the Medical Council of New Zealand. The University of Auckland's MBChB is also recognised for registration in several other countries, including the UK, the USA, Canada, Thailand, Sri Lanka and Singapore. It also has full reciprocity in Australia.

Once you have gained general registration, you might choose primary health care and work in general practice, or choose from a range of other specialist disciplines, such as general practice, dermatology, emergency medicine, general medicine, paediatrics, geriatric medicine, obstetrics and gynaecology, medical research and more.

Research opportunities

If you are interested in research, you may defer your clinical MBChB studies after Part III and undertake a year pursuing a supervised research project of your choice to qualify for a Bachelor of Medical Science (Honours) degree before returning to complete your clinical training and graduating with both qualifications.

Further study

Graduates can also choose from a wide range of postgraduate programmes for doctors wishing to further their interests, up to PhD.



Entry requirements:

• **Applications for the 2027 intake close on July 31 2026. To apply for the MBChB under the Graduate Entry category, the following applies:**

- International applicants need to have completed a relevant degree on a full time basis at a recognised university.
- Your last year of full time degree study must be no more than five years prior to the year of application.
- Shortlisted international graduate applicants will be interviewed over Skype or by phone.
- International graduate applicants are not required to take the UCAT ANZ.
- Minimum grade point equivalent (GPE) of 6.0 is required (<https://gpecalculator.auckland.ac.nz/>)

• **For more information, visit:**

www.auckland.ac.nz/en/study/study-options/find-a-study-option/bachelor-of-medicine-and-bachelor-of-surgery-mbchb.html

• **Important notes:**

- You can only apply once under the Graduate Entry category for each qualifying programme attained.
- Entry criteria may change from year to year.
- Meeting the minimum entry requirements does not guarantee admission into the programme.

• **Tuition fees:** Annual tuition fees are NZ\$86,500; total tuition fees are approximately NZ\$435,000. Fees are set in advance of each calendar year and are updated on the University's website. Fees are inclusive of 15% GST, but do not include the Student Services Fee, course books, travel and health insurance, or living costs. In addition to the tuition fees, there is a Student Services Fee of \$8.38 per point, estimated at \$1,005.60 for a year of full-time study (120 points). Fees will be confirmed upon completion of enrolment into courses. Amounts here may change, are indicative and given as estimates only.



A student's experience: Vishvini Vijayakumaran is a fourth year medical student

"For me, the most fulfilling experience I've had so far has been working in a hospital setting and being able to see patients and work with a healthcare team. I had no idea how enthusiastic I was about medicine until I was able to use it in a real-world setting.

"I chose the University of Auckland in large part because I am from Singapore, an ethnically diverse country. As an international student, I wanted to make sure the medical school I chose would be in a comparable area and uphold similar principles. I wanted to be able to widen my horizons while also learning from the perspectives of another culture.

"The University of Auckland programme was appealing as each year you expand your knowledge about the Indigenous people, as well as learning strategies for addressing inequities"

"I adore the culture, the environment, and the sense of community I am constantly surrounded by in T maki Makaurau, Auckland. I come from a bustling country, so having the chance to experience new facets of life makes me feel appreciative every day that I have this opportunity. Aotearoa, New Zealand also offers a large range of outdoor activities, which keeps me entertained in my free time."

How to apply

Applications should be made through Study Options, Auckland's representative in the UK. Contact **Sarah Nash** to discuss and plan your application.

Send applications to:
sarah@studyoptions.com

Study Option is a free application and advice service for students applying to Australian and New Zealand medical schools. Study Options is funded by the universities to provide application support on their behalf.

Monash University

Doctor of Medicine

At Monash, we are driven to help people live better, for longer. Illnesses including heart disease and diabetes place enormous pressure on the health system. Combined with an increased life expectancy and an ageing population, we need to do more to improve health and wellbeing at all stages of life. As well as chronic illnesses and disease, we proactively tackle mental health, addiction and quality of life in aged care - key health issues that came to the fore in the COVID-19 pandemic.

Our main focus is on improving outcomes for patients by making sure that medical students are strongly connected with our academic experts and clinicians.

In the MD you will be learning from staff across the Faculty of Medicine, Nursing and Health Sciences who are leaders in their field. You will also benefit from our links with the largest health care provider network in Australia, which includes the Monash Medical Centre and The Alfred Hospital (Melbourne's major casualty hospital), Eastern Health, and health services in rural and regional Victoria and outer metropolitan Melbourne. Australia's first specialist heart hospital, which opened in February 2023, is also located on Monash University's Clayton campus.

Our course has a very strong focus on patient safety, evidence-based practice, clinical role modelling, and professionalism.



Course structure

In **Year A (1)** the basic professional, biomedical, social and behavioural concepts are introduced. Students complete this first year of pre-clinical study at the **School of Rural Health in Churchill** with regular visits to the Clayton campus as part of their studies. There is a particular emphasis on clinical issues as illustrated through the cases presented in the problem-based learning sessions. Clinical and communication skills are developed and students undertake early clinical placements in hospitals. Students will also commence the Community-based Practice program and participate in learning activities in Indigenous health.

In **Year 3B (2)** students are placed within Monash teaching hospitals. The emphasis moves towards multi-system disease representations that will form the core of the learning in integrated medicine and surgery.

In **Year 4C (3)** clinical teaching builds upon and reinforces this strong foundation through the core clinical rotations of women's and children's health, general practice and medicine of the mind (psychiatry).

The final year of the course, **Year 5D (4)**, is structured as a number of clinical placements (or rotations) and is based upon a trainee internship model. These rotations take place in both community and hospital settings. One is an elective placement, where students will choose to complete their degree by gaining wider experience in chosen disciplines and specific areas of interest. Your clinical placements during the year include acute care, medicine, surgery,



and chronic care. There is also a placement in medical specialty of which you can select from an extensive range of options.

Why Medicine at Monash?

Variety of learning styles

Our innovative teaching sessions provide you with a range of learning modes. Lectures, seminars, workshops, tutorials and simulation sessions are designed to suit the content being covered. These sessions are delivered from content experts within the university as well as clinicians and researchers.

Early clinical experience – hospital or GP observation

You'll have the opportunity to interact with health care professionals through a variety of medical contact visits to hospitals or community clinics. This aspect of the course allows you to experience an introduction to medical interviewing with real patients, taking a family history, as well as exploring the ethical aspects of clinical work.

Research component

Basic research skills are introduced in the first and further developed in second year. In the final year of the course you will undertake a scholarly intensive placement under the supervision of a researcher or clinician. You will have the opportunity to explore an aspect of research or professional practice using the research skills you developed earlier in the course.

Integrated case learning and clinical skills practice

Integrated Case Learning (ICL) sessions are small group

tutorials that are structured around a clinical scenario. In the early years, your ICL tutorials in groups of 12–15 students will incorporate curriculum content from biomedical sciences, sociology of science, clinical skills and professional requirements of clinical practice (eg. ethics, law).

Professional development

Professional behaviour, and its importance in health service delivery, is nurtured along with the development of other high level skills. You will be expected to be aware of and demonstrate the professional values and qualities of doctors including respect for others, confidentiality, trustworthiness and dependability.

Clinical skills

Clinical skills sessions are active, hands on learning led by clinicians. It's about developing fundamental skills for taking a patient history, and covers basic examination techniques and simple procedural skills. Clinical placements provide opportunities for you to develop and enhance your skills and knowledge by engaging with real patients during bedside tutorials and clinical settings, under the guidance of medical practitioners.

Simulation – patient safety

The Patient safety programme is delivered in the third year and is designed to equip you with the knowledge, skills and attitudes necessary to be a safe practitioner. Simulations and clinical skills workshops are designed to provide practical hands on simulation experiences of authentic scenarios from clinical practice. This programme is invaluable in preparing you for your role as an intern.

Entry requirements:

• Applications for the 2027 intake close on June 30 2026.

• In order to be considered for entry, applicants must have completed or be in the final year of completing a bachelor's degree from an internationally recognised university. The degree must consist of significant and broad biomedical science content (for example pharmacology, physiology, immunology, biochemistry, genetics or microbiology) to be eligible for consideration.

• Applicants must achieve a minimum GPA of 6.0 out of 7.0. International applicants are NOT required to undertake the MCAT or GAMSAT to be considered for the Graduate Entry programme at Monash.

• Your academic record accounts for 40% of your Monash assessment. Applicants will be invited to attend an interview (MMI format) based on their academic results. Interview performance accounts for 60% of your assessment.

• Meeting the minimum admission requirements does not guarantee selection.

• **Costs** The annual full-time tuition fee for the Monash MD is \$102,000; total tuition fees are approximately \$410,000.



How to apply

Applications should be made through Study Options, Monash's representative in the UK. Please contact **Sarah Nash at Study Options** to discuss and plan your application.

Applications should be emailed to:
sarah@studyoptions.com

Study Option is a free application and advice service for students applying to Australian and New Zealand medical schools. It is funded by universities in Australia and New Zealand to offer application support on their behalf.

Doctor of Medicine and Surgery

The Doctor of Medicine and Surgery, or *Medicinae ac Chirurgiae Doctoranda*, at ANU is a comprehensive, varied programme for graduates looking to enter the rewarding field of medicine as professional medical practitioners.

The MChD is underpinned by four themes:

- **Medical sciences**, covering a vast scope of ever-changing and expanding knowledge that forms the basis of modern medicine
- **Clinical skills**, which ensures the acquisition of knowledge is accompanied by communication skills, the ability to examine patients and to critically appraise information
- **Population health**, addressing the relationship between humans, their society and environment
- **Professionalism and leadership**, developing these vital skills of a good doctor.

The curriculum is built on important frameworks that explore the social foundations of medicine, develop understanding of Indigenous health context in Australia, and provide insights and experience in health care in rural and/or remote Australian settings. In keeping with the research focus of ANU, the MChD also develops students' research skills.

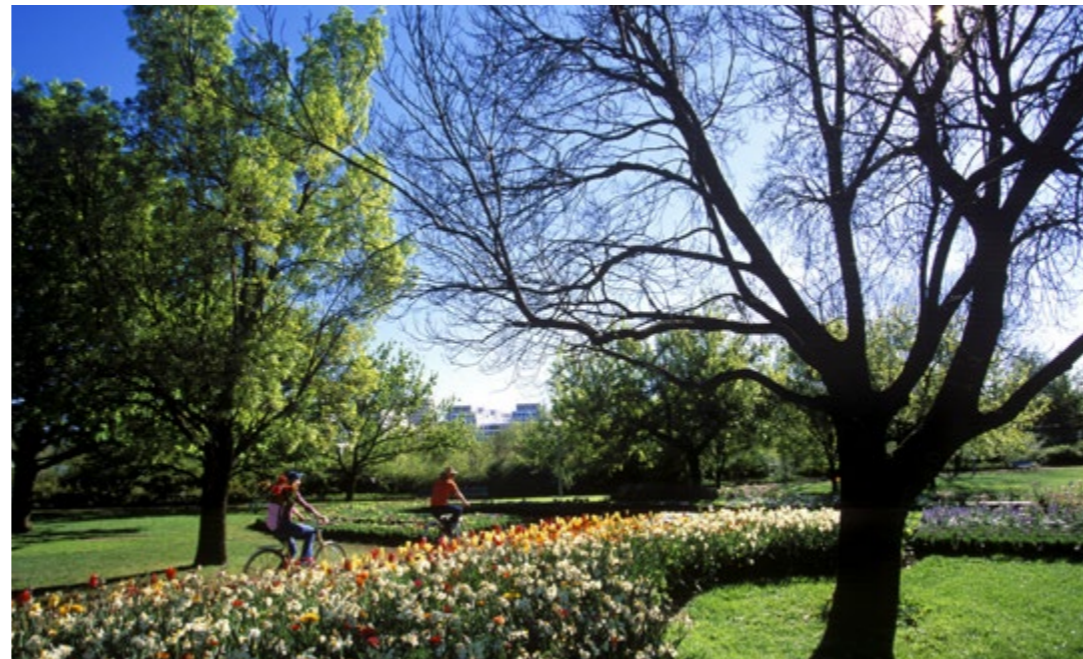
Programme details

Years 1 and 2

During the first two years of the course, the curriculum is built around clinical case studies designed to promote creative and analytical thinking through both cooperative and self directed learning.

Each week, students are presented with a case study, working through hypotheses and diagnoses in a scientific manner. The clinical case studies are supported by lectures, practicals, tutorials and a weekly clinical day in one of Canberra's hospitals. All learning resources are accessed through the university learning management system.

During the first two years, students spend one week in a rural location around Canberra and the south-east of NSW. In second year, rural week focuses on Indigenous health.



What the students say

Kitiphume Thammahiraphop

"It's these fantastic relationships you make at ANU that become your support when you're entering the workforce. This has been especially true in a field like medicine. Having such a strong connection with a friendship group who has been through similar experiences to you really makes a difference. Likewise, being an ANU alumnus brings its own sense of community."

Seraina Elia

"The digital resources and the simulation learning opportunities we have access to are quite phenomenal. The Clinical Skills educators go above and beyond with how and what they teach. As a final year student, I've valued the simulation programme immensely. It puts students into real-world emergency situations where they are taught a framework and strategies to deal with the crisis."



How to apply

Applications should be made through Study Options, the University's representative in the UK. Please contact Sarah Nash at Study Options to discuss and plan your application.

Applications should be emailed to:
sarah@studyoptions.com

Study Option is a free application and advice service for students applying to Australian and New Zealand medical schools. Study Options is funded by universities in Australia and New Zealand to provide support with the application process on their behalf.

Key dates

Early March	Applications open
30 June	Applications close
Mid/late July	International Interviews
August	International offers released

These dates are subject to change.

Students also conduct a research project during this time, expanding their knowledge and research skills through collaboration with the world class research teams here at ANU.

Years three and four

From the end of the second year, students spend almost all of their contact hours in the health sector. During this time, they are immersed in all the major medical disciplines through rotations of four or more weeks in the Canberra, Rural and Sydney Clinical Schools.

Year 3

During third year, students again venture into the rural clinical realm, this time for six weeks. Students enrolled in the rural stream will spend their entire third year as an active member of a rural community.

Year 4

At the beginning of fourth year, students



undertake an elective term of four or more weeks at a worldwide location of their choice. The main objective of this term is to broaden students' clinical horizons beyond the established curriculum and to gain personal life experience.

Careers

After completing your MChD, you can enter the medical workforce as an intern or postgraduate year 1 (PGY1) doctor. The MChD qualification is also recognised in countries outside Australia through its accreditation by the Australian Medical Council and listing on the International Medical Education Directory and the World Health Organisation Medical School Directory. However, specific countries may require additional steps to be completed before the degree is recognised by that country.

As an alternative to practising medicine, the MChD also equips you for a career in medical research, public health or health journalism.

Admissions criteria

• Admission to the Doctor of Medicine and Surgery for international applicants is based on:

- A weighted Grade Point Average (GPA) from qualifying degree/s*
- A valid GAMSAT or valid MCAT score *
- An interview *

*See specific sections to determine eligibility. More information is available at: <https://science.anu.edu.au/study/masters/doctor-medicine-surgery-mchd/admission-requirements>

• Understand the entry requirements

- Check admissions requirements on the Programs and Courses website and read the admissions guidelines
- Applicants should be aware that the ANU's English Language Admission Requirements differ from the Medical Board of Australia's English Language requirements. This becomes more significant upon graduation and prior to registering for an internship.

• Meet qualification requirements

- Applicants must have completed or be studying the final year of a bachelor degree at the point of application.
- If your bachelor degree was completed more than 10 years ago, you will need to meet additional study requirements to be eligible to apply.
- Higher-level qualifications such as graduate diplomas and masters by coursework may be considered if the course is complete or you are in your final year at the time of application. Applicants who have completed a higher-level qualification but do not hold a recognised bachelor degree as well are not eligible for consideration.

• Grade Point Average (GPA) calculations

- GPA calculations are based on the last three years of full-time equivalent study (3.0 EFTSL) in your most recent eligible degree (or combination of degrees, if applicable). Only bachelor, graduate diploma and masters by coursework qualifications are used to calculate GPA. A weighted GPA is used for the calculation.
- Final GPA Year = Weighted x3

- Final-1 GPA Year = Weighted x2
- Final-2 GPA Year = Weighted x1
- You must have a minimum weighted GPA of 5.0 on the Australian 7 point scale to be considered for an interview.
- Meeting the minimum GPA does not guarantee an interview.

• Interview

- Selection for interview is based on a 50:50 composite score derived from your GPA (weighted 50%) and overall GAMSAT or MCAT score (weighted 50%), plus any applicable higher degree research bonus.
- Applicants must meet the minimum GPA and GAMSAT or MCAT scores to be considered for an interview.
- Interviews are conducted online via zoom. The interview will cover a range of topics and scenarios.

• Receive an offer

- Offers of a place will be based on a final weighted score derived from the interview score (weighted 50%) and the composite GPA/GAMSAT or MCAT score used for the interview ranking (weighted 50%) plus any applicable higher degree research bonus. Successful applicants will be offered an International Full-Fee Paying Place.

• Accepting your offer

- The offer is issued to you as an Overseas Student as defined by the Higher Education Support Act 2003 (HESA). If your residency status changes prior to census date in your first semester, such that your student status is defined as Domestic, the offer will be retracted and you would need to reapply to a future intake as a domestic applicant. If your residency status changes after census date in your first semester, such that your student status is defined as Domestic, you will be transferred to a domestic tuition fee-paying (DTF) place.
- If your visa, residency and/or passport details change you must notify the university within 10 working days.

Professional progression as a medic in Australia

When a student graduates from a medical degree in Australia or New Zealand they are required to complete their internship years in order to gain full registration as a medic. This is essentially the same training format as that used in the UK, where graduates are required to complete the NHS foundation years before they can achieve full registration.

Graduates are no longer considered students once they commence internship training; instead these are salaried roles and the person is considered a graduate doctor.

The Australian Medical Association has a helpful page about career progression and vocational training following graduation.

After graduation, you will qualify for 'provisional registration', while completing the intern year within a health service (hospital setting).

After completing intern training, you then qualify for general registration. Australia has a 1-2 year residency period for most doctors following internship, although some colleges do accept trainees immediately out of internship. The residency rotations are usually able to be geared towards someone's area of interest, though this may be limited by the availability at the health service.

After registration, you can go one of two routes: Vocational (specialty training/registrar) or non-vocational. Non-vocational are usually based in hospitals or other health services, are not specialised in a particular area, but operate largely independently and autonomously (though within reporting structures of the health service they are based in). While this is currently the minority in Australia, there is an emerging group of 'Hospitalists', which are slightly different to the 'Internists' seen, for example, in North America.

Career Medical Officers is a common term for these doctors, who help bridge the gap, usually in hospitals, that sometimes occurs when patient care doesn't necessarily require a specialist, but needs more experience than that of an intern or resident. They are still required to undergo regular professional development and training. CMOs are becoming more common, and the AMA recently revised a **position statement about development of these positions**.

In contrast, registrars apply for and enrol in specialty programs through the various specialist colleges (there are 16 in Australia, including General Practice), which after 3-7 years qualify them to work fully unsupervised and independently in that specialty.





studyoptions
Study in Australia or New Zealand

0117 911 5610
mail@studyoptions.com
www.studyoptions.com/contact

Study Options is a free application and advice service for students applying to Australian and New Zealand medical schools