



studyoptions
Study in Australia or New Zealand

Guide to undergraduate medical degrees in Australia and New Zealand (S1 2027)

Introduction

Welcome to Study Options' Guide to undergraduate medical degrees in Australia and New Zealand. This aims to provide an overview of the courses available and to help you choose which degrees and universities to apply to.

After reading this, please book an online or phone appointment with **Sarah at Study Options**. Sarah oversees all medical applications at Study Options and has been successfully guiding students on applying to Australian and New Zealand medical schools for over 20 years.

Sarah can guide you on which courses and universities might suit you best – and advise on where your applications are more likely to be successful. After agreeing your university shortlist, Sarah will send you the application forms and a full guide to making your applications.

Applications should be sent to Study Options via email. They will be checked to ensure everything is complete and correct – and as strong as possible – before being uploaded to the Australian and New Zealand admissions teams for assessment.

Study Options is a free service for students. It is funded by Australian and New Zealand universities to help students through the application process on their behalf. In addition to course advice and application processing, Study Options provides full pre-departure support with student accommodation, organising health and travel insurance and applying for a student visa. For more information about Study Options and how we can help you, please visit www.studyoptions.com

Sarah Nash, Study Options
✉ -@studyoptions.com

studyoptions
Study in Australia or New Zealand

Study Option is a free application and advice service for students applying to Australian and New Zealand medical schools. Study Options is funded by universities in Australia and New Zealand to provide support with the application process on their behalf.

Applications should be made through Study Options. Please contact **Sarah Nash at Study Options** to discuss and plan your application.

Contents

- 3 Choosing which medical schools to apply to**
- 5 Degree listings – starting in Semester 1 (February) 2027**
- 9 How and when to apply**
- 10 James Cook University**
- 12 Curtin University**
- 14 University of Tasmania**
- 16 University of Auckland**
- 18 Monash University**
- 20 University of Newcastle College Foundation to Medicine**

How to choose

In this guide you will find details of all the medical degrees available. So how do you decide which to focus on? Here are a few factors to consider



1. Content and structure of the degree

Check the details of each course in this guide carefully. Undergraduate medicine degrees in Australia and New Zealand can be five, six or seven years long, depending on the university's curriculum. Some will involve clinical experience from the start of first year; others will focus on academic content for the first one or two years before moving into clinical learning. Ask yourself which of these structures would suit you and your style of learning best.

*Note: All the programmes in this guide are direct entry medical degrees – students apply for them with school qualifications and begin studying after successful completion of secondary school. Provided grades are maintained at the level required by the university, students are **guaranteed** to progress through to clinical medical training. All the programmes in this guide are fully accredited by the Australian and the New Zealand Medical Councils, and students who complete the degrees successfully will move forward into the first steps of their medical careers.*

2. The number of places available

This is a practical – or strategic – consideration. The number of places available to international applicants at each medical school is clearly marked on the programme information. Study Options recommend that you aim for a range when making your application shortlist.

3. Location: Where do you want to study?

Going to university is not just about studying – what sort of environment do you want to be in as a student? Are you drawn to bustling cities, or would you prefer to be somewhere smaller and calmer? Medicine is a demanding degree, and it's important to be in a location that allows you to create a healthy study/life balance. So please factor the broader university environment into your choices. You can get more information about the universities, their locations and the student lifestyles they offer [here](#).

4. Professional accreditation

Please check that your chosen Australian or New Zealand medical degree will be recognised in the country, or countries, that you wish to work in as a doctor in the future. It is your responsibility as the applicant to check this. If you want to work in the UK, for example, this is relatively straightforward. The UK General Medical Council has introduced the Medical Licensing Assessment (MLA) which aims to test the core knowledge, skills and behaviours needed to practice safely in the UK.

Graduates of international medical schools must take the PLAB test (which is MLA compliant) when they apply for registration with a licence to practice in the UK. The MLA test also applies to students at UK medical schools – as of 2024/2025 graduates must pass the MLA as part of their medical degree before they can join the UK medical register. Please click [here](#) for more information. Many Australian and New Zealand medical degrees are also recognized in other countries, including Singapore, Hong Kong, Canada and Malaysia. Please check individual university degree descriptions to get specific details of their accreditations.



5. Study costs

Anyone who is not a citizen or permanent resident of Australia or New Zealand is classed as an international student and is therefore required to pay international tuition fees. International tuition fees to study medicine range from approximately £35,000 to £50,000 per year.

It is very unusual for universities to offer scholarships to international students to study medicine. Fees therefore need to be privately funded. Different universities charge different tuition fees so there is no consistency in tuition costs – please check this information carefully and use it as part of your decision-making on where to apply.

6. Academic (and other) entry requirements

Undergraduate medicine applications are assessed against the following criteria:

- Academic achievement (predicted or actual grades or scores from secondary school qualifications)
- Aptitude test results (sometimes)
- Interview (almost always)

Please see the individual programme details in this Guide for university-specific admission requirements.

Notes: Academic requirements

Academic requirements (A-level grades, IB scores, or equivalent qualifications) are always given as minimums. This means that the score quoted is the lowest score possible to be considered for a place – it does NOT mean that if you achieve that score you're guaranteed an offer.

Final assessments are not completed until after IB and A-Level results have been confirmed, in July and August. There is therefore some leeway – if you are keen to apply to a programme that has a minimum score requirement above what you are predicted, we can discuss the application. It is important to be realistic, however – do you feel confident that your final results will be higher than your predictions? We may need to bring your school in to those discussions.

Please also take careful note of any subject pre-requisites listed – these are not negotiable! If you have not studied a pre-requisite subject please let Sarah at Study Options know as soon as possible in case she is able to suggest an alternative way of meeting the requirement.

Notes: Aptitude tests

Where a university requires aptitude test scores to be provided, they will typically use this data – rather than predicted scores or grades – to rank students for interview. This means that an application to a medical school that requires aptitude test data cannot be assessed until a test score is provided.



Aptitude test 1: UCAT ANZ

(www.ucat.edu.au)

- Must be taken the year before entry (eg in 2026 for degrees starting in February 2027). Registrations close in mid-May, the test itself is available to take on dates throughout July and in the first week of August.
- UCAT ANZ is required by: **Adelaide University, the University of Queensland, University of Newcastle.**
- UCAT ANZ is also accepted by **UNSW Sydney** and the **University of Tasmania.**
- Available to take at locations throughout the UK.
- Two-hour computer-based test made up of four sections: Verbal Reasoning, Decision Making, Quantitative Reasoning and Situational Judgement.
- Multiple choice format.
- Can only be taken once in the test cycle.
- Australian and New Zealand universities do NOT currently accept UCAT UK.
- Students must not take the UCAT UK and the UCAT ANZ in the same calendar year. Doing so is considered to be candidate misconduct and will render both sets of results immediately invalid.

Aptitude test 2: ISAT

(www.isat.acer.org)

- Four testing cycles each year, in January, May, August and November. The test can only be taken in the year before entry (eg in 2026 for Feb 2027 admission)
- This test is required by: **The University of Western Australia (UWA), Monash University.**
- It is also accepted by **UNSW Sydney** and the **University of Tasmania.**
- Available to take at test centres located throughout the UK (Prometric test centres)
- ISAT is a three-hour computer-based test made up of 100 questions in a multiple choice format
- ISAT tests a candidate's ability to read and analyse material, rather than their academic knowledge. There are two sections in the test, Critical Reasoning and Quantitative Reasoning.
- Both UWA and Monash require students to take ISAT in test cycle 1 (January) or test cycle 2 (May). Tasmania accepts January, May or August results, and UNSW Sydney accepts results from all four testing cycles provided there are still places left on the course.

Medical degrees at a glance

The three universities on this page require students to take the **UCAT ANZ** test



Adelaide University, Adelaide
www.adelaideuni.edu.au

Bachelor of Medical Studies and Doctor of Medicine

Annual tuition fees: Approximately A\$99,000

Course duration: 6 years (3 + 3)

Minimum entry requirements to apply: 12 points at A-level or 33 points at IB. Students must have taken one of maths, chemistry or biology at A-level or Higher Level.

Additional requirements? Yes, UCAT ANZ, plus an interview

Application deadline: 30 June 2026

Places for international students: Approx 30 per year

Anything else I should know? UCAT ANZ registrations close before the Adelaide application deadline. You must include evidence of your test registration when sending your application to Study Options. Adelaide University will not waive its application fee (A\$150) for applications to medicine.



University of Queensland, Brisbane
www.uq.edu.au

Bachelor of Medical Science/Doctor of Medicine

Annual tuition fees: TBC

Course duration: TBC but expected to be 6 years (2 years for bachelors + 4 years for Doctor of Medicine)

Minimum entry requirements to apply: TBC 14 points at A-level (must be from best of three) or 37 points at IB

Additional requirements? Yes, UCAT ANZ plus an interview

Application deadline: 29 September 2026 TBC

Places for international students: Up to 45 each year

Anything else I should know? This programme is being revised for the S1 2027 and full and final details will be provided as soon everything is confirmed. Please contact Sarah@studyoptions.com with any questions in the meantime.



University of Newcastle, Newcastle
www.newcastle.edu.au

Bachelor of Medical Science and Doctor of Medicine (Joint Medical Programme)

Annual tuition fees: Approximately A\$92,700

Course duration: 5 years

Minimum entry requirements to apply: 14 points from three A-level subjects or 38 points at IB. No subject pre-requisites

Additional requirements? Yes, UCAT ANZ. Shortlisted students will also be asked to complete a personal qualities (Multiple Skills Assessment) interview

Application deadline: 4 September 2026

Places for international students: TBC

Anything else I should know? If you do not meet entry requirements for the JMP you can apply for Newcastle's Foundation Studies in Medicine pathway (see right).

Foundation Studies in Medicine

Tuition fees: A\$37,400

Course duration: 12 months

Minimum entry requirements to apply: A-Levels with a C average across a minimum of 3 academic subjects; 24 points at IB over a minimum of 6 subjects. No subject pre-requisites

Additional entry requirements: None

Places for international students: 25 per year

Anything else I should know? Yes, successfully completing this Foundation Studies course does not guarantee progression to the JMP at Newcastle. Students must meet minimum academic standards in their JMP and will also need to complete the Multiple Skills Assessment and an interview.

A-Level points are calculated as follows:

A* = 6 points; **A** = 5 points; **B** = 4 points, **C** = 3 points, **D** = 2 points and **E** = 1 point.

The two universities below require applicants to take the **ISAT** aptitude test



University of Western Australia, Perth
www.uwa.edu.au

Doctor of Medicine via Bachelor of Biomedicine (Specialised)

Annual tuition fees: Approximately A\$51,400 per year for the first 3 years; A\$93,000 for the final 3 years

Course duration: 6 years (3 + 3)

Minimum entry requirements to apply: A Levels: Minimum AAA (15 points) or minimum score of 40 in IB. It is recommended that students have good passes in maths and chemistry, but these are not compulsory prerequisites

Additional requirements: You must take ISAT in the January or May 2026 testing cycle in order to be considered for the 2027 intake of this course. An interview is also required.

Application deadline: 30 June 2026

Number of places available for international students: Approximately 20

Anything else I should know? Yes – students who have commenced any tertiary level study (whether that is a diploma or a degree) are not eligible to apply for this programme at UWA.



Monash University, Melbourne
www.monash.edu.au

Bachelor of Medical Science/ Doctor of Medicine

Annual tuition fees: Approximately A\$101,600

Course duration: 5 years

Minimum entry requirements to apply: 15 points at A-Level or 39 at IB. Chemistry is a pre-requisite subject (to A2 or Higher Level). Biology is recommended, but not compulsory

Additional requirements? ISAT plus an interview – Monash use an MMI format. Students MUST take ISAT no later than the May 2026 testing cycle to be considered for admission in S1 2027. Interviews are held in late July.

Application deadline: 30 June 2026

Number of places available for international students: Approximately 90

Anything else I should know? Applicants must be in their final year of secondary school, or have completed ALevels, IB or the equivalent level qualification no more than two years prior. Applicants must not have undertaken any tertiary level studies. You will need a score of at least 175 at ISAT to be competitive in an application for this degree.

These two universities accept either the **UCAT ANZ** or the **ISAT** aptitude test

University of Tasmania, Hobart
www.utas.edu.au

Bachelor of Medical Science/Doctor of Medicine

Annual tuition fees: Approximately A\$82,500

Course duration: 5 years

Minimum entry requirements to apply: 13 points at A-level, or 35 points at IB. You must be studying (and achieve a strong pass in) chemistry at A2 or Higher Level. Maths is also preferred but is not compulsory

Additional requirements? Yes, aptitude test scores. The University of Tasmania accepts either the ISAT (minimum overall 170, no section scores below 165) or the UCAT ANZ (50 percentile minimum).

Application deadline: There are four offer rounds through the year. Application deadlines are 30 May, 31 July, 30 September and 30 November 2026

Number of places available for international students: Approximately 30

Anything else I should know? 25 international student places are based in Hobart; 5 are in Launceston.



UNSW Sydney, Sydney
www.unsw.edu.au

Bachelor of Medical Studies/Doctor of Medicine

Annual tuition fees: Approximately A\$95,500

Course duration: 6 years

Minimum entry requirements to apply: 17 points at A-level (from 3 or 4 A-levels) or 40 points at IB. It is recommended that students have taken chemistry to A2 or Higher Level, but this is not a compulsory pre-requisite

Additional requirements? Yes, aptitude test scores and an interview. UNSW Sydney accepts either the ISAT or the UCAT ANZ. It is the student's choice which test results they submit, but they can only present one test score, which cannot be changed once submitted.

Application deadline: 1 December 2026 but earlier applications are strongly recommended as rolling interviews commence in May.

Number of places available for international students: Approximately 100

Anything else I should know? Assessments are based on three criteria at UNSW Sydney: Academic merit + ISAT or UCAT ANZ results + interview. Your application will NOT be considered until you have provided an ISAT or UCAT ANZ score, even if you have completed A-levels or IB at the point of application. UNSW Sydney will not waive its \$150 application fee for medicine; this must be paid.



The following six universities do not use aptitude tests when assessing



**James Cook University,
Townsville and Cairns**
(www.jcu.edu.au)

Bachelor of Medicine, Bachelor of Surgery

Annual tuition fees: Approximately A\$71,500

Course duration: 6 years

Minimum entry requirements to apply: 15 points at A-level or 38 points at IB. Maths and chemistry are compulsory pre-requisites. If you are studying A-levels, these subjects must be taken to A2. If taken to Higher level at IB, the minimum subject score required for each is 3. If the subject has been studied at Standard level in IB, the minimum score is 4. There is also a requirement for a formal pass in English. If you have taken GCSEs in the UK, a good pass in English will meet this requirement. If you have not taken GCSEs in the UK and are not taking a language-rich subject at A-level or IB, please contact Study Options to discuss

Additional requirements? No aptitude test required. Students need to complete an additional application form specific to the JCU School of Medicine (available from Study Options). Shortlisted students will be interviewed
Application deadline: 30 June 2026

Number of places for international students: 40

Anything else I should know? IB applicants must provide their final results by 31 July; A-level students by 16 August 2026.



Curtin University, Perth
(www.curtin.edu.au)

Bachelor of Medicine, Bachelor of Surgery

Annual tuition fees: Approximately A\$101,000

Course duration: 5 years

Minimum entry requirements to apply: 14 points at A-Level or 39 in the IB. Must include chemistry (IB chemistry at HL, minimum score of 4, or A-Level chemistry). Maths is also preferred, but is not compulsory (this can be studied to SL or HL in IB, and to AS or A2 Level)

Additional requirements? Yes, interview.

Application deadline: 20 June 2026

Places for international students: 15

Anything else I should know? Yes – eligible students will be invited to interview on dates in July and August. Final IB and A-levels must be provided as soon as they are available. Incomplete tertiary qualifications are not accepted for admission, but it is possible to apply if you have completed a full undergraduate degree.

A-Level points are calculated as follows:

A* = 6 points; A = 5 points; B = 4 points, C = 3 points, D = 2 points and E = 1 point.



Griffith University, Gold Coast
(www.griffith.edu.au)

**Bachelor of Medical Science/
Doctor of Medicine**

Annual tuition fees: Approximately A\$39,500 for the first two years of study, then A\$84,500 per year for the subsequent four years (Doctor of Medicine)

Course duration: 6 years (2 + 4)

Minimum entry requirements to apply: 16 points at A-level (calculated from three A-levels) or 39 at IB.

Additional requirements? No

Application deadline: 31 July 2026. ALL documents must be provided by this deadline. It is therefore NOT possible to apply for admission in S1 2027 if you are due to receive A-level results in August 2026.

Number of places for international students: TBC – changes year on year. Places are limited, however.

Anything else I should know? You must have completed secondary school up to one year before applying and must not have attempted any tertiary study (at diploma level or higher) in order to be eligible. Students who get A-level results in 2026 are eligible to apply for S1 2028.



University of Sydney, Sydney
(www.usyd.edu.au)

The following two programmes offer students guaranteed entry to the Sydney Doctor of Medicine, provided GPA is achieved at the required level throughout the bachelors degree. Please note that at the University of Sydney the bachelors degree is NOT accelerated. These programmes therefore require a total of 7 years of study.

Bachelor of Arts/Doctor of Medicine

OR

Bachelor of Science/Doctor of Medicine

Annual tuition fees: Approximately A\$60,000 per year for the BSc or BA; A\$97,000 per year for the Doctor of Medicine

Course duration: 7 years (3 + 4)

Minimum entry requirements to apply: Four A* grades at A-Level or 45 points at IB

Additional requirements? Yes, interview

Application deadline: Rolling

Number of places for international students: 10

Anything else I should know? The University of Sydney does not issue conditional offers for either of these degrees; you must provide final results with your application in order to be assessed. There is a A\$150 application fee for medicine that cannot be waived.



University of Auckland, Auckland
(www.auckland.ac.nz)

Bachelor of Medicine, Bachelor of Surgery

Annual tuition fees: Approximately NZ\$45,000 for the first year (Bachelor of Health Science); NZ\$86,500 per year thereafter (Bachelor of Medicine, Bachelor of Surgery)

Course duration: 6 years (1 + 5)

Minimum entry requirements to apply: Admission to Bachelor of Health Sciences requires 12 points (ABB) at A-Level with at least one science subject, or 33 points at IB. Please note students must then apply for admission to the MBBS during their first year of undergraduate study at Auckland and will be assessed on their undergraduate GPA, UCAT ANZ score, and interview performance

Additional requirements: Not for admission to B Health Science, but aptitude tests and interviews are required during the first year of study in order to progress to the MBBS (see point above). Chemistry is highly recommended but not compulsory

Application deadline: For applications to the B Health Science, 8 December 2026

Number of places available for international students: Uncapped in B Health Science; 30 per year for admission to MBBS

Anything else I should know: Applications to the MBBS are made DURING the first year of undergraduate study at Auckland rather than in the final year of school. A-level or IB results are therefore not considered in this application process. Instead, GPA is calculated on first year undergraduate results alone. Students are NOT guaranteed to progress to the MBBS.



University of Otago, Dunedin
(www.otago.ac.nz)

Bachelor of Medicine and Bachelor of Surgery

Annual tuition fees: NZ\$43,250 for first year, average NZ\$104,000 per year thereafter

Course duration: 6 years (1 + 5)

Minimum entry requirements to apply: Admission to Health Sciences First Year requires minimum score of CCC at A-Level, or 24 points at IB. Please note that students must apply for admission to the MBBS during their first year of undergraduate study at Otago and will be assessed on undergraduate GPA, UCAT ANZ score, and interview performance

Additional requirements? Not for admission to Health Sciences First Year, but aptitude tests and interviews will be required at the end of that first year in order to progress to the MBBS

Application deadline: For Health Sciences First Year, 15 November 2026

Number of places for international students: Uncapped for admission to Health Sciences First Year; approximately 25 per year for admission to MBBS

Anything else I should know? Otago will not take your IB score or A-level results into account when you apply to MBBS as an Otago first year student. Your GPA will be calculated solely from your first year undergraduate modules. Students are NOT guaranteed to progress to the MBBS.

APPLICATION NOTES: INTERVIEWS

Medical school interviews

If your actual or predicted academic results from school and your aptitude test scores place you in the top group of applicants to a medical programme, you will be invited to interview.

Each university runs its own interviews and has its own format and preferred style of questioning. In most cases, however, expect a Multiple Mini Interview (MMI) format.

MMI interviews typically involve being given a scenario-based question, allowed some time to formulate your answer, and then giving that response. At some universities, the interviewer might be a member of the medical school staff or the admissions team, and could ask follow up questions. At others, you might be asked to provide your response to an actor who is role-playing the question, while the interviewer watches on.

The majority of medical schools in Australia and New Zealand conduct interviews online, though there are opportunities to undertake interviews face-to-face in the UK (please contact sarah@studyoptions.com for further information). When you receive an invitation to interview, check the details carefully and

make sure you complete any tasks promptly (such as confirming or booking the date and time). If the interview is going to be held online, make sure you know which platform it is on (Zoom? Teams? Google Meet?) and check that you are able to access it – set up an account if you don't have one already. On the day of your interview, you need to be in a quiet room with a good WIFI signal. You'll also need a reliable device to work from – preferably a computer, rather than a phone.

Prepare carefully! Interview performance can account for up to 50% of your overall mark at some Australian medical schools.

To get free, expert help preparing for your medical school interviews contact Sarah at Study Options Sarah@studyoptions.com or call 0117 911 5610.



How and when to apply

WHEN

Aim to **discuss your plans and create an application shortlist with Study Options 12-18 months before courses start (early in year 13, if you are currently at school)**. You may need to take aptitude tests, or provide other information, and these requirements need to be factored in to timelines. The earlier you know what you need to do, and when to do it by, the better!

Australian and New Zealand universities start teaching in late February each year – this is Semester 1 in the Southern Hemisphere. **Medicine degrees are ONLY available to start in Semester 1 (February)**.

The assessment cycle runs for the 12 months before the degrees start (for example, January – December 2026 for medicine degrees starting in February 2027). **Applications are made during year 13 if you are a school student. Please aim to confirm your shortlist of medical schools to Sarah at Study Options early in year 13.** She will create an application plan and timetable for you to work to.

Applications should be submitted to Study Options by the last Friday in May each year for the Semester 1 start the following year (eg May 2026 to start in S1 2027). Please contact **Sarah Nash at Study Options** with any questions about the application process (sarah@studyoptions.com; 0117 911 5610)

HOW

Applications for medical degrees in Australia and New Zealand are made **via Study Options, NOT via UCAS**. Application forms are available from Study Options (contact sarah@studyoptions.com, or download from www.studyoptions.com/how-apply/)

Students are required to provide **completed application forms, a personal statement and (where required) aptitude test results OR confirmation that they have registered for the relevant aptitude test**. Study Options will contact your school directly to request the academic information needed for your applications.

You can nominate medicine as your first choice at each university you apply to if you wish. **Australian and New Zealand universities allow all students to select a first and a second choice degree on their applications**, so you can name a back up option – for example biomedical science, or health science – as your insurance degree choice on each form.

You can only apply where your actual or predicted results meet the minimum requirements. Australian and New Zealand university entry requirements are not flexible, and cannot be appealed or negotiated.



James Cook University

Bachelor of Medicine, Bachelor of Surgery

Why study medicine at JCU?

On the other side of the world, an unforgettable medical training experience awaits – a medical degree with adventure, skills and impact in tropical Australia. James Cook University (JCU) offers one of Australia's most sought-after medical programmes. The six-year **Bachelor of Medicine, Bachelor of Surgery** degree will equip you for a rewarding career in medicine, and provide plenty of adventures along the way.

JCU Medicine received 5 Stars for learner engagement from the 2023 Good Universities Guide (UG Medicine) and is rated number one in the state of Queensland for overall educational experience, student support and teaching quality. Students gain expertise across a broad range of clinical and biological fields, including anatomy, infection control, disease prevention, biochemical processes, health promotion and medical ethics.



The first three years of the degree centre on providing comprehensive foundational knowledge and skills. This is complemented by a strong focus on clinical skills from the start, with an observation placement in general practice at the end of first semester and regular hands-on practice. Students are provided with an authentic clinical skills learning experience, role-playing real-life scenarios to prepare them for their future careers.

After the foundations have been laid, years four to six of the degree focus on clinical training at JCU Clinical Schools in hospitals across the tropical and outback regions of northern Queensland. As a regional-based medical school with small class sizes and extensive clinical hours, there are plenty of opportunities for hands-on training.

"Our students are spread out across the state and beyond," JCU Medicine Foundational Studies Lead Associate Professor Julie Mudd says. "Because they might be the only student there, or as one of two or three, they get a lot of opportunities to practice their skills. There's no wall of medical students standing behind the doctor. Our students, particularly our sixth-years, are integrated members of the medical team."

A full breakdown of the course structure is available at www.jcu.edu.au/courses/bachelor-of-medicine-bachelor-of-surgery?international#accordion_handbook

www.studyoptions.com

Rural placements: There's no substitute for experience

If you ask JCU medical students about their most memorable university experiences, you'll hear a lot about rural placements. With over 3,370 placement hours throughout the degree, it's a core component of our students' training and is a unique aspect of our course.

JCU has 699 placement locations across regional, rural and remote Australia, providing a broad range of clinical and community experiences designed to foster an interest in rural health. Following the observational placement in first-year, students undertake longer placements in their second and fourth years and are primarily based at hospitals from year four through year six.

Fourth-year JCU medical student, Akruthi Balaji, spent four weeks on placement on Thursday Island during her second year of study. She says the tropical island community was worlds away from her hometown of Yellowknife in the Northwest

Territories of Canada:

"It's really opened my eyes to how many options there are in medicine," Akruthi says. "It's made me more inspired and passionate about this career path. I had an amazing experience and would strongly recommend it to anyone! It was a great clinical experience. I got to see a variety of tropical medicine cases, which are quite unique. It was also a fantastic rural and community-based experience. You get to see things from a very different perspective when you're rural, which is very cool," she says.

JCU Medicine graduate of 2021, Dr Visai Muruganandah adds, "One of my favourite experiences was going to primary care outreach clinics to the outer islands of the Torres Strait. Each island is like its own tropical paradise, and I feel privileged to have had the opportunity to be involved with delivering much-needed primary care to the culturally rich and beautiful communities of the Torres Strait. I couldn't think of a better way to finish medical school."

Students can choose to take the experience to the next level with extended rural placements. In addition to the standard 20 weeks, JCU medical students can apply to undertake a four-month or ten-month extended placement in their final year of the degree. Dr Georgia Bulley is another of JCU's



How to apply

Applications should be made through Study Options, JCU's representative in the UK. Please contact **Sarah Nash at Study Options** to discuss and plan your application. The JCU application form is available [here](#)

Applications should be emailed to:
Sarah@studyoptions.com

Study Option is a free application and advice service for students applying to Australian and New Zealand medical schools. Study Options is funded by universities in Australia and New Zealand to provide support with the application process on their behalf.

medical graduates who was well-equipped to begin her medical career following her extended placement:

"The level of clinical skills I've gained by being in the same region for this amount of time is insane," Dr Bulley says. "I don't think it would be the usual experience sixth-year med students get in metropolitan hospitals! When you're on an extended placement, it's more than just a taste of tasks. You're getting the opportunity to put skills into practice."

The results of JCU's strong clinical placement experience are medical graduates who are ready to hit the ground running in their internship year as junior doctors.

Associate Professor Julie Mudd not only trains JCU students, but has also worked alongside them in her role as a public health physician at hospitals in the northern Queensland cities of Townsville and Cairns.

"It's incredibly gratifying. I am very proud when I see our sixth-year students functioning well alongside the residents and interns. In my clinical role, I work alongside colleagues who are JCU graduates and they're a testament to the quality of the teaching," Associate Professor Mudd says.

Come for the medical training and stay for the lifestyle

If you're considering moving from over 15,000km from the UK to North Queensland, you've probably got a healthy appetite for adventure. And if it's an adventure you're looking for, pursuing your medical career with JCU Medicine in North Queensland will not disappoint.

You can undertake your medical degree at our tropical campus in Cairns, surrounded on three sides by rainforest-covered mountains and just minutes drive away from some of Cairns' best beaches.

Or commence study at the JCU Townsville campus, set in 386-hectare natural bush and parkland setting, with a range of accommodation options on-site. Both regional centres lie on the doorstep of the Great Barrier Reef, one of the seven wonders of the natural world.

When it comes to rural placement, the vast state of Queensland offers a taste of everything. Experience the rugged Outback of the North-West or the pristine islands of the Cape and Torres Strait. An important part of placement is experiencing the true-blue community spirit of rural Australia, and students are actively encouraged to make the most of getting to know the region.

JCU Medicine graduate Dr Marina Khair completed an 18-week placement on the Atherton Tablelands in rural Queensland and says the sense of community left a lasting impression: "I love the shared energy by the locals, including doctors, nurses, and allied health professionals in exploring and valuing the beautiful scenery. Many of the doctors joined in on the hikes, which were frequently followed by evening campfires and it was a thrilling experience getting to know everyone," Marina says.

Your training experience with JCU Medicine will be as unique and unforgettable as our beautiful northern Queensland landscapes. Discover JCU Medicine; receive a hands-on and supportive medical education, make a difference in rural communities, and get set for adventure.

Entry requirements:

• Academic entry scores (UK)

- GCE A-Level: Minimum score of 15 from the best of 3 A-levels where A* is worth 6 points, A is worth 5, B is worth 4 and so forth. You must have completed (or be studying) A-level chemistry and maths
- International Baccalaureate – completed IB with minimum score of 38 points or above. You must have completed (or be studying) International Baccalaureate chemistry and maths at SL or HL

Depending on your prior academic studies, you may also be required to meet course minimum English requirements of IELTS 7 overall, or provide an approved equivalent test score.

• Supplementary application form; interview

Costs The annual tuition fee is approx. A\$71,500



Curtin University

Bachelor of Medicine, Bachelor of Surgery (MBBS)

Curtin University recognises the complex issues facing global health systems, its workforce and the need for more doctors to be generalists in their orientation. This means we are committed to producing graduates who are better equipped to meet community needs, with primary care expertise, strong leadership skills and the ability to operate effectively in interprofessional care teams.

Teaching across the five years of our Bachelor of Medicine, Bachelor of Surgery (MBBS) is mostly delivered face-to-face, including small group tutorials, larger seminars and clinical placements across hospital and community health settings.

In the final two years, which are largely spent on placement in clinical settings, you will return to the main Curtin campus on multiple occasions for intensive 'back-to-campus' weeks to develop clinical, communication and practical skills that build on your placement experiences.



Curtin University

Accreditation: The Curtin MBBS is accredited in Australia by the Australian Medical Council (AMC). If you are planning to work outside Australia, you must contact the relevant country's accreditation body for further information on how to practise and register there.

Themes: The course is underpinned by four interrelated curriculum domains, integrated across the five years. These domains reflect the multifaceted role of the doctor: Clinical Practitioner; Professional and Leader; Health Advocate; and Scientist and Scholar.

Clinical placements: You will be allocated, by Curtin Medical School, clinical placements within several Perth-based hospitals in addition to general practice clinics and rural medical settings across the state of Western Australia. Placements hours are scaled upwards through the degree with fieldwork commencing in first year and culminating in large block clinical placements in your fifth (final) year.



CURTIN UNIVERSITY
PERTH, WESTERN AUSTRALIA

Year 1

In the first year of the course, you will undertake interprofessional units that promote collaborative practice and learning opportunities with other health sciences students. You will be introduced to problem based learning in discipline-specific units in medicine and participate in structured activities that take you into the community with a variety of health professionals.

Year 2-3

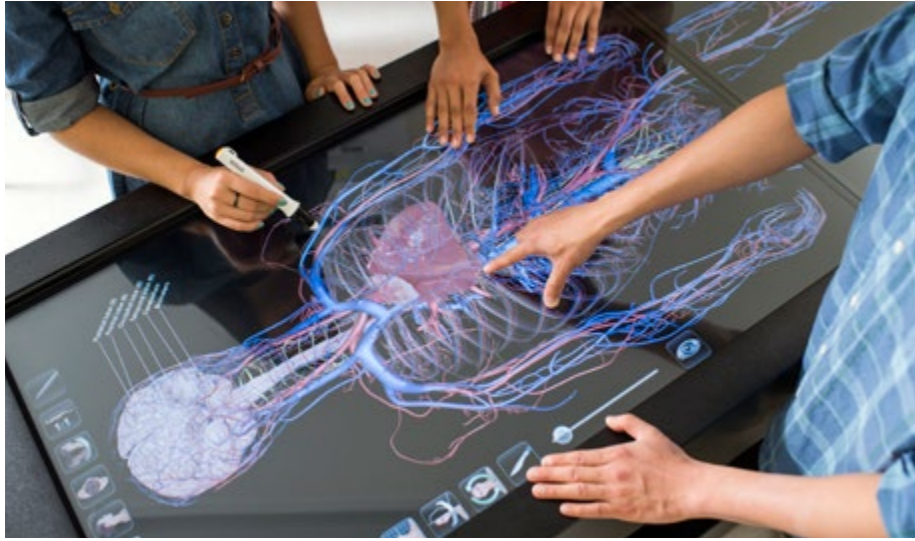
The second and third years include intensive study of the structure and function of the human body in health and disease, using a problem based learning approach. Students will be exposed to several resources for anatomical education, including cadavers, models and the use of virtual, interactive anatomage tables. You will continue to have opportunities to experience a range of healthcare settings.

Year 4

In the fourth year there is a transition from learning on the University campus to learning in the clinical setting. You will be offered a variety of clinical experiences including placements in outer metropolitan, rural and regional locations, in both community and hospital settings.

Year 5

In the fifth and final year of study, you will work in clinical settings as a member of a healthcare team. Training in the clinical settings will be in a range of different environments to prepare you for your internship.



Why choose to study medicine at Curtin University?

- **Industry links** This course strongly prepares you to work in rural and remote locations, where there is an acute shortage of doctors.
- **Accelerated learning** Five-year, direct-entry – the only undergraduate entry medical degree in Western Australia.
- **Highly ranked university** Curtin graduates were rated the best in Australia in the most recent QILT employer satisfaction survey.
- **Purpose-built facilities** Our facilities offer the latest teaching and learning resources, supported by advanced technology, providing you with industry relevant training and practical experience. Curtin Midland and the Kalgoorlie Rural Health campus provide you with opportunities to undertake placements and training opportunities beyond Perth in Western Australian health facilities.
- **Student support** Curtin provides additional supports to help you deal with the academic

and holistic challenges unique to the medical course. The Curtin Association of Medical Students (CAMS) is a student-run organisation that provides academic support through curriculum-specific events and encourages your involvement by developing inspiring and valuable events, to engage you.

Who can apply?

- **School leavers** – this programme is primarily designed for students who are completing their secondary education.
- **Graduates** – non-school leavers (graduates) are applicants from any university, including Curtin, who have completed a tertiary degree.
- **Curtin course switchers** – a Curtin course switcher is an applicant who is enrolled in an undergraduate degree at Curtin University and does not have a tertiary record from any other Australian or overseas university, or who has not already completed a degree at Curtin University.

How to apply

Applications should be made through Study Options, Curtin's representative in the UK. Please contact **Sarah Nash at Study Options** to discuss and plan your application. The application form is available [here](#)

Applications should be emailed to: Sarah@studyoptions.com

Study Option is a free application and advice service for students applying to Australian and New Zealand medical schools. Study Options is funded by universities in Australia and New Zealand to provide support with the application process on their behalf.

Entry requirements:

- **Academic entry scores (UK)**
 - GCE A-Level: Minimum score of 14 points where A* is worth 6 points, A is worth 5; B is 4 and so forth. You must have completed an A-level in chemistry
 - International Baccalaureate – completed IB with minimum score of 39 points or above. Completion of International Baccalaureate chemistry at HL or SL with a result of grade 4 or higher

Depending on your prior academic studies, you may also be required to meet course minimum English requirements of IELTS 7 overall, or an approved equivalent test score.

- **MMI (Multiple Mini Interview)** The top ranked eligible applicants will be invited to attend a Multiple Mini interview. You will be ranked for interview based on your actual or predicted grades or scores from school. Interviews will only be available on dates published by the Curtin Medical School in July and August.

- **Costs** The annual tuition fee is approximately A\$101,000.

University of Tasmania

Bachelor of Medical Science and Doctor of Medicine

Learn the theory and practical skills required for an exciting career in medicine at the University of Tasmania. We have been producing highly skilled graduates for over 50 years by ensuring that students are mentored by academics and clinicians committed to their education.

You'll learn the science of medicine while gaining knowledge and clinical experience. You'll also learn about population health, ethics, and professional elements of medical practice. Your studies will lead you to become a highly capable doctor and establish the foundation for lifelong learning throughout an endlessly rewarding career.

The Bachelor of Medical Science and Doctor of Medicine degree is an on-campus, full-time course, closely integrated with the Tasmanian health system.

You'll receive educational support and mentoring from experienced clinicians and health organisations. This means you get unparalleled hospital access, as well as diverse opportunities for placements in primary care settings which are at the forefront of providing healthcare for our communities. This includes access to our regional and remote clinical schools.

In the last two years of the course, you'll have immersive clinical experiences to prepare you for an internship and your future career as a medical professional.

- Access to training within the Tasmanian health system gives you hands-on mentoring and clinical experience
- Our medical course has a 100% intern placement rate in Tasmanian hospitals
- Learn in our state-of-the-art facilities and alongside skilled practitioners.

Course structure

In this course, you will learn the basic science of medicine and how it's applied in a clinical environment – along with the ethical and professional elements of practice.

From first year, you will be gaining first-hand experience through professional practice placements, while your course work brings together case-based learning with a range of opportunities to expand your expertise – from anatomy dissection to acquiring clinical skills.



Years 1-3

Students will undertake predominantly campus-based learning programmes, including lectures, tutorials and practical classes. Patient contact will be introduced in the first two years in a variety of environments, exposing students to a range of healthcare practices with particular emphasis on community and rural settings. This experience will produce graduates with the flexibility to adapt to a range of healthcare environments in their future careers. A focussed transition to learning in clinical settings will occur in the third year.

Years 4-5

Students will be involved in a series of clinical rotations including some electives. Learning in conjunction with other health professionals will be encouraged, to assist graduates develop team skills and foster a multi-disciplinary approach to healthcare. Students will also have the opportunity to undertake the final three years of the course in clinical placements at one of the three Clinical Schools (students can be allocated to any of the following three):

- Hobart Clinical School
- Launceston Clinical School
- Rural Clinical School in Burnie

To further support the development of desirable workplace graduate skills in research, leadership, entrepreneurship, health systems change and professional practice, you will have the opportunity to engage in a research or professional project during your degree.

By the time you have finished your fifth and final year of study, you will possess the skills, knowledge and attitudes to begin supervised practice as an intern in Australia or New Zealand and will have laid the foundations for a career that is always enlightening and endlessly rewarding.

The University of Tasmania BMedScMD Curriculum

The University's BMedScMD curriculum has four domains as its organising principle, under which the learning outcomes are grouped and assessed. The four domains incorporate the University of Tasmania's graduate profile objectives and the Australian Medical Council's recommendations regarding the knowledge, skills and attitudes of a medical graduate. The four domains are:



- **Science and Scholarship** (the medical graduate as scientist and scholar)
- **Clinical Practice** (the medical graduate as practitioner)
- **Health and Society** (the medical graduate as a health advocate)
- **Professionalism and Leadership** (the medical graduate as a professional and leader)

Our curriculum uses a learner-centred approach. Specifically, it seeks to help students respond flexibly to unfamiliar and complex information or situations. Teaching and learning strategies have been designed to challenge students to explore their current concepts and develop new thinking.

Another important principle is that of 'situated' learning which encourages engagement and enhances recall. There will be a focus on regular (weekly) Case Based Learning (CBL) activities to aid integration and highlight important concepts.

Entry requirements:

Applications are considered on the basis of academic ranking plus aptitude test scores.

• Academic entry scores (UK)

- GCE A-Level: Minimum score of 13 or above from the best of 3 A-levels where A* is worth 6 points, A is worth 5, B is 4 and so forth. You must have completed A-level chemistry. Maths is preferred, but is not compulsory
- International Baccalaureate – completed IB with minimum score of 35 points or above. Completion of International Baccalaureate chemistry at SL or HL

• Aptitude test scores. All test results must be provided by the relevant application closing date to be considered for entry.

- ISAT Test (isat.acer.org) Applicants must achieve an overall total score of at least 170, with a minimum score of 165 in both sections – Critical Reasoning and Quantitative Reasoning

OR

- UCAT-ANZ (ucat.edu.au). Applicants require a valid UCAT ANZ total score in the 50th percentile or above. This is the minimum score needed for an application to be considered. UCAT ANZ results are valid for the current university admission cycle ONLY.

- **Costs: The annual tuition fee is approximately A\$82,500**



How to apply

Applications should be made through Study Options, the University of Tasmania's representative in the UK. Please contact **Sarah Nash at Study Options** to discuss and plan your application. The application form is available [here](#)

Applications should be emailed to: Sarah@studyoptions.com

Study Option is a free application and advice service for students applying to Australian and New Zealand medical schools. Study Options is funded by universities in Australia and New Zealand to provide support with the application process on their behalf.



The University of Auckland

Bachelor of Medicine and Bachelor of Surgery (First Year Entry)

Start your story at the University of Auckland, Waipapa Taumata Rau. As New Zealand's premier¹ University, the University of Auckland is ranked in the top 100 universities worldwide² and is located in Auckland, New Zealand's largest city and commercial epicentre.

A diverse and vibrant multicultural hub, which consistently ranks as one of the most liveable cities in the world, Auckland is an inspiring place for you to start your international student experience and your medical career.

The University of Auckland's Faculty of Medical and Health Sciences, Māturanga Hauora, is located at the modern Grafton Campus, in the heart of the Auckland city and across the road from the beautiful Auckland Domain and Auckland City Hospital.

Since its beginnings in 1968, the Faculty has become internationally recognised as a comprehensive medical and health sciences faculty. Within the faculty, the School of Medicine offers the Bachelor of Medicine and Bachelor of Surgery (MBChB) programme, providing students with exceptional opportunities to gain medical knowledge, clinical experience and research skills needed to pursue a vocation in any field of medicine.

As a student at the Faculty, you'll be taught by lecturers and researchers at the top of their fields, learn in world-class training facilities and make life-long connections with fellow students.

Research strengths

Our faculty is considered the largest biomedical research faculty in New Zealand, with a proud history of attracting and growing pre-eminent researchers, talented students and generating high levels of research funding. We are committed to improving the health of our local, national and global communities through excellence in research and our students learn in a research rich environment and generate a significant proportion of the research drive and outputs of the faculty and the wider University. We host four transdisciplinary University Research Centres, a Centre for Research Excellence and numerous Faculty Research Centres.

¹Times Higher Education and QS World University Rankings 2023

²(QS) World University Rankings 2023

³QS World University Rankings: Sustainability 2023; and Times Higher University Impact Rankings

Bachelor of Medicine and Bachelor of Surgery Course Structure – First Year Entry

As a student, you will gain invaluable exposure to diverse clinical environments and acquire hands-on experience at New Zealand's largest teaching hospital, which will effectively prepare you for your future in the field of medicine and empower you to shape the future of healthcare.

The MBChB is a six-year programme including Year One (Part I) of the Bachelor of Health Sciences or the Bachelor of Science in Biomedical Science (105 points).

- In Year One (Part I) you are required to complete eight core courses including one 15-point course from the General Education Schedule approved for this degree.
 - In Year Two (Part II) you are required to complete a core course that focuses on the basic medical and health sciences while being introduced to professional and clinical aspects of medical practice (120 points).
 - In Year Three (Part III) you have two core courses: Medical Humanities and a course focussing on human health and illness (120 points).
- In Years Four (Part IV), Five (Part V) and Six (Part VI) you learn predominantly in hospital and community environments, with rotating study in a number of disciplines for 38-44 weeks of the year (120 points in each clinical year).
- Students in all three clinical years have the opportunity to study in either the Auckland metropolitan area, regional centres in the North Island of New Zealand and surrounding rural areas. All students are required to spend one clinical year out of Auckland.
- In Year Five (Part V) you have the opportunity to complete a five-week period of selective study and, in Year Six (Part VI) an 8-week Research Project or Elective, which you are encouraged to undertake in New Zealand or overseas.
- All six years must be passed in their entirety before you are permitted to graduate with the degree of Bachelor of Medicine and Bachelor of Surgery (MBChB).

Where can this programme take you?

Gain an internationally recognised qualification

Students who complete the medical programme are eligible to apply for provisional registration with the Medical Council of New Zealand. The University of Auckland's MBChB is recognised for registration in several other countries, including the UK, the USA, Canada, Thailand, Sri Lanka, Singapore, and full reciprocity in Australia. Once you have



gained general registration, you might choose primary health care and work in general practice, or choose from a range of other specialist disciplines, such as general practice, geriatric medicine, dermatology, emergency medicine, general medicine, paediatrics, obstetrics and gynaecology, medical research and more.

Research opportunities

If you are interested in research, you may defer your clinical MBChB studies after Part III and take a year to complete a supervised research project to qualify for a Bachelor of Medical Science (Honours) before returning to complete clinical training and graduating with both qualifications.

How to apply

Applications should be made through Study Options, the University of Auckland's representative in the UK. Please contact **Sarah Nash at Study Options** to discuss and plan your application. The application form is available [here](#)

Applications should be emailed to:
Sarah@studyoptions.com

Study Option is a free application and advice service for students applying to Australian and New Zealand medical schools. Study Options is funded by universities in Australia and New Zealand to provide support with the application process on their behalf.

Entry requirements:

Students are required to apply for admission to the MBBS during their first year of undergraduate study at Auckland, rather than in their final year of high school. Assessments are made during the first year of study.

Students applying from school need to apply to either the Bachelor of Health Sciences (BHS) or the Bachelor of Science (BSc) Biomedical Science at the University of Auckland. During the first year, you must complete eight required courses (listed on the MBChB programme page). Only the first attempt for these courses will be considered for MBChB admission in the First Year category.

Interview eligibility

You will need to achieve a minimum Grade Point Average (GPA) of 6.0 across all eight first year courses, with no fails, to be eligible for consideration for an admission interview (MMI – Multi Mini Interviews).

Interview ranking

If eligible, you will be ranked for interview

invitation. This ranking will be based on your grades in the four core courses: BIOSCI 107, CHEM 110, MEDSCI 142, and POPLHLTH 111. If your final grades are not available at the time of interview ranking, an interim grade (highest possible) will be temporarily assigned. Official final results will be used for the final selection.

Final selection ranking

Applicants will be offered admission to the MBBS programme according to rank order until the available places in the category are filled. Interviewed applicants' final ranking is based on a weighting of the following components:

- **GPA for four core courses:** 60%
- **UCAT-ANZ:** 15%
- **Interview:** 25%

Please note selection criteria may change. For further information, refer to our FAQs.

Costs The first year's annual tuition fee is NZ\$45,000. From Year 2, the annual tuition fee is NZ\$86,500; total tuition fees are approximately NZ\$480,000.

A student's experience:

Vishni Vijayakumaran, fourth year medical student

"For me, the most fulfilling experience I've had so far has been working in a hospital setting and being able to see patients and work with a healthcare team. I had no idea how enthusiastic I was about medicine until I was able to use it in a real-world setting.

"I chose the University of Auckland in large part because I am from Singapore, an ethnically diverse country. As an international student, I wanted to make sure the medical school I chose would be in a comparable area and uphold similar principles. I wanted to be able to widen my horizons while also learning from the perspectives of another culture.

"The University of Auckland programme was appealing as each year you expand your knowledge about the Indigenous people,

as well as learning strategies for addressing inequities."

"I adore the culture, the environment, and the sense of community I am constantly surrounded by in Tāmaki Makaurau, Auckland. I come from a bustling country, so having the chance to experience new facets of life makes me feel appreciative every day that I have this opportunity. Aotearoa, New Zealand also offers a large range of outdoor activities, which keeps me entertained in my free time."

““

I adore the culture, the environment and the sense of community I am surrounded by in Auckland

””



Monash University

Bachelor of Medical Science/Doctor of Medicine

At Monash, we are driven to help people live better, for longer. Illnesses including heart disease and diabetes place enormous pressure on the health system. Combined with an increased life expectancy and an ageing population, we need to do more to improve health and wellbeing at all stages of life. As well as chronic illnesses and disease, we proactively tackle mental health, addiction and quality of life in aged care – key health issues that came to the fore in the pandemic.

Our main focus is on improving outcomes for patients by making sure that our medical students are strongly connected with our academic experts and clinicians.

In our programme you will be learning from staff across the Faculty of Medicine, Nursing and Health Sciences who are leaders in their field. You will also benefit from our links with the largest health care provider network in Australia, which includes the Monash Medical Centre and The Alfred Hospital (Melbourne's major casualty hospital), Eastern Health, and health services in rural and regional Victoria and outer metropolitan Melbourne. Australia's first specialist heart hospital, which opened in February 2023, is also located on Monash University's Clayton campus.



Our course has a strong focus on patient safety, evidence-based practice, clinical role modeling, and professionalism.

What will you study?

The first two years of our course are largely campus-based, while years three to five are conducted in clinical settings in hospitals and practices across metropolitan Melbourne and rural Victoria.

In Years 1 and 2 basic professional, biomedical, social and behavioural concepts are introduced. Basic sciences physiology, biochemistry, anatomy and pharmacology are taught and there is a particular emphasis on clinical issues as illustrated through the cases presented in the problem-based learning sessions. Clinical and communication skills are developed and students undertake early clinical placements in hospitals. Students will also commence the Community-Based Practice programme and participate in learning activities in Indigenous health.

In Year 3B students are placed within Monash University teaching hospitals. The emphasis moves towards

multi-system disease representations that will form the core of the learning in integrated medicine and surgery.

In Year 4C clinical teaching builds upon and reinforces this strong foundation through the core clinical rotations of women's and children's health, general practice and medicine of the mind (psychiatry).

In Year 5D students undertake clinical placements (or rotations). These rotations in medicine, surgery, aged care, emergency and specialty areas take place in both community and hospital settings. One of the rotations is an elective placement, where students will choose to complete their degree by gaining wider experience in chosen disciplines and specific areas of interest.

Curriculum themes

The course develops through theme studies, all of which come together in professional practice demonstrated in the clinical placement units. These themes are configured vertically across the five years of the course. They are also horizontally integrated with the year, bound together by the core focus on the doctor/patient interaction.

Theme I: Personal and Professional Development focuses on the personal and professional attributes and qualities needed by students in the medical curriculum and as future medical practitioners. This theme covers elements of professionalism, communication skills, ethics and legal issues, clinical effectiveness, and health and behavioural self-management.

Theme II: Society, Population, Health and Illness focuses on population health, epidemiology and the social, environmental and behavioural contexts of illness and the practice of medicine, including an emphasis on rural and remote Australia. Other elements are built around health promotion, epidemiology, public health, community diversity, population and global health, and a range of other social issues. The history and philosophy of the scientific approach to medicine is included, as are approaches to knowledge and information, and an understanding of evidence-based clinical practice.

Theme III: Scientific Basis of Clinical Practice is the knowledge and concepts of the basic medical sciences and clinical sciences as they underpin medicine. The basic



	Year 1	Year 2	Year 3B	Year 4C	Year 5D
	Foundations in Basic Sciences	Foundations in Basic Sciences	Foundations in Clinical medicine	Integration and Teams	Preparing for Practice
Theme I	Anatomy	Social Sciences	Medicine	General Practice	Medicine
	Physiology	Population Sciences	Surgery	Children's Health	Surgery
Theme II	Biochemistry	Clinical Skills	Pathology	Women's Health	Emergency Medicine
	Pharmacology	Social Sciences	Population Health	Medicine of the world	Aged Care
Theme III	Social Sciences	Community Engagement			Specialty
	Population Sciences				Elective Patient Safety
	Campus based		Hospital / Community based		

medical sciences of anatomy, biochemistry, genetics, microbiology, histology, pathology, immunology, pharmacology, physiology and psychology are taught in an integrated manner and from a relevant clinical perspective. In Years 3B, 4C and 5D, learning occurs in a more overt clinical context, building on existing knowledge and encompassing pathology, diagnostic and therapeutic skills, with a particular focus on common and important conditions and presentations.

Theme IV: Clinical Skills encompasses the whole range of clinical skills from the earliest to the later parts of the course. Practice in clinical skills is emphasised early and often, and includes procedural and clinical skills. The approach in clinical skills teaching and learning will be to develop defined clinical competencies. This will begin with clinical aspects of communication skills and move through history-taking and physical examination to more advanced clinical and procedural skills.

Why study medicine at Monash?

- **Variety of learning styles**

Our innovative teaching sessions provide you with a range of learning modes. Lectures, seminars, workshops, tutorials and simulation sessions are designed to suit the content being covered. These sessions are delivered from content experts within the university as well as clinicians and researchers.

- **Early clinical experience – hospital or GP observation**

You'll have the opportunity to interact with health care professionals through a variety of medical contact visits to hospitals or community clinics. This aspect of the course allows you to experience an introduction to medical interviewing with real patients, taking a family history, as well as exploring the ethical aspects of clinical work.

- **Research component**

Basic research skills are introduced in first and further developed in second year. In the final year of the course you will undertake a scholarly intensive

placement under the supervision of a researcher or clinician. You will have the opportunity to explore an aspect of research or professional practice using the research skills you developed earlier in the course.

- **Integrated case learning and clinical skills practice**

Integrated Case Learning (ICL) sessions are small group tutorials that are structured around a clinical scenario. In the early years, your ICL tutorials in groups of 12–15 students will incorporate curriculum content from biomedical sciences, sociology of science, clinical skills and professional requirements of clinical practice (such as ethics and law).

- **Professional development**

Professional behaviour, and its importance in health service delivery, is nurtured along with the development of other high level skills. You will be expected to be aware of and to demonstrate the professional values and qualities of doctors including respect for others, confidentiality, trustworthiness and dependability.

- **Clinical skills**

Clinical skills sessions are active, hands on learning led by clinicians. It's about developing fundamental skills for taking a patient history, and covers basic examination techniques and simple procedural skills. Clinical placements provide opportunities for you to develop and enhance your skills and knowledge by engaging with real patients during bedside tutorials and clinical settings, under the guidance of medical practitioners.

- **Simulation – patient safety**

Our Patient Safety programme is designed to equip you with the knowledge, skills and attitudes necessary to be a safe practitioner. Simulations and clinical skills workshops are designed to provide practical hands on simulation experiences of authentic scenarios from clinical practice. This programme is invaluable in preparing you for your role as an intern when you graduate.

A student's experience: Harrison – Bachelor of Medical Science/Doctor of Medicine

“The reason I wanted to apply for medicine was to continue to live and engage in regional and rural communities. As I was born and raised in Warrnambool and went to boarding school in Ballarat, I have always enjoyed being part of a community and I was keen to explore other regional and rural sites across Victoria. A lot of my interests outside of university are best suited to regional towns and I wanted to ensure I had this life balance as I progressed through university.

“The biggest benefits I received while being rural in my clinical years was the clinical experience I received along with the support and patience shown by the teams I was a part of. As generally there are less people on any given team in regional and rural hospitals it meant there was more opportunity for me to get involved.

“As a student I was able to help write notes, perform procedures and review patients, all of which has helped me feel more confident heading into an internship. Due to the smaller size of the hospitals I found that there was greater opportunity to meet and connect with senior doctors who acted as great mentors and helped to guide my journey in medicine beyond university.

“I have felt supported while in my rural placements. In particular the rural clinical schools were great at supporting students and making the adjustment to the different towns as comfortable as possible. I was able to spend a lot of time at certain sites, which enabled me to build strong relationships with the staff and helped me feel comfortable on placement. There is also accommodation aid for rural placements with Monash providing students with fully furnished share houses with an easy rent paying system that included all bills and was quite cheap compared with Melbourne rentals. The community itself also supports you; the more you invest into the community of the town the more you will get out of it. I spent

a lot of time playing and getting involved in football clubs and the people involved helped me settle into the community. Through this involvement I met nurses, doctors and allied health workers at the footy club which in turn then provided more support on placement.

“I am completing my intern year at Bendigo Health and aim to continue my medical career in the rural and regional workforce. I hope to continue to stay involved and play a role in the community I reside in throughout my career and I see this can be best done in rural and regional areas. The placements also helped me gain a better understanding of the issues facing rural health and provided further motivation to want to help contribute to the rural medical workforce.

“I would encourage all applying for medicine to consider rural placements as they provide a unique, hands-on clinical experience that will serve you well in your studies and also provide a lot of opportunity outside of university to truly live in a new town, explore the state and meet new people. If you are someone who plans on working rural in the future then I would strongly consider the rural cohort and even if you are someone who never wants to work rural, rural placements are beneficial as you will one day liaise with rural hospitals and a knowledge of how they operate will serve you well.

“It is also important to know that being rural as a medical student will not put you behind in pursuing your future career. I would also say that being rural, though, comes with its challenges. I spent the majority of my clinical years about 600 kms away from my home and from Melbourne, which at times can be hard and predisposes you to FOMO. However, through the support of the clinical schools, peers and the community I felt I was able to create a home away from home and ended up wanting to stay in my town a lot more than I wanted to leave.”

Entry requirements:

Monash University's Direct Entry Bachelor of Medical Science and Doctor of Medicine (MD) is only open to applicants who have completed secondary school studies no more than two years prior, and who have not commenced any other studies at a tertiary level during that time. Applicants who have commenced tertiary study are ineligible to apply for this course.

- **Academic entry scores (UK)**

- GCE A-Level: Minimum score of 15 points from the best of 3 A-levels where A* is worth 6 points, A is worth 5, B is 4 and so forth. You must have completed A-level chemistry
- International Baccalaureate – completed IB with minimum score of 39 points or above. Completion of International Baccalaureate chemistry at HL with grade 4 or higher, or SL grade 5 or higher

Depending on your previous academic studies, you may also be required to meet minimum English language requirements of IELTS 7 overall, or an approved equivalent English language test score.

- **ISAT scores**

- You are required to sit the ISAT and achieve an overall total score of at least 175, with a minimum of 165 in both sections (Critical Reasoning and Quantitative Reasoning). You must take the ISAT test in Test Window 1 (January) or Test Window 2 (April-May) in order to meet the application deadline for our degree.

- **MMI (Multiple Mini Interview)**

- The top ranked eligible applicants will be invited to attend an MMI. Interviews will be held in late July.

- **Costs: The annual tuition fee is approx. A\$101,600**

How to apply

Applications should be made through Study Options, Monash's representative in the UK. Contact [Sarah Nash at Study Options](#) to discuss and plan your application. The application form is available [here](#)

Email applications to: Sarah@studyoptions.com

Study Option is a free application and advice service for students applying to Australian and New Zealand medical schools. Study Options is funded by universities in Australia and New Zealand to provide support with the application process on their behalf.

University of Newcastle College (CIE)

Foundation Studies in Medicine

If you have just missed out on direct entry into an undergraduate medicine degree programme, the **Foundation Studies in Medicine (FSM) programme** provides you with a dedicated pathway to the undergraduate medicine degree at the University of Newcastle. This is one of just a handful of programmes of its type in Australia. Please note that progression rules apply.

What makes the CIE Foundation Studies in Medicine programme different?

- Successful applicants will receive a packaged offer for both the Foundation Studies in Medicine program and the Joint Medical Program. Acceptance of the offer means that you'll receive two electronic Confirmation of Enrolments (eCOE) – one for each programme – which you'll use to apply for your student visa for the combined duration of your studies.
- The University of Newcastle has a minimum of five quota places in the JMP reserved exclusively for FSM students at CIE, though the final number is usually higher. In 2023, ten FSM students successfully progressed to the JMP.
- Unlike direct entry students, you're exempt from having to sit the University Clinical Aptitude Test (UCAT ANZ).
- You'll receive dedicated seminar and workshop support from our Student Experience team to best prepare you for successful progression to the JMP.



COLLEGE OF INTERNATIONAL EDUCATION

- Achieve an overall average score of 90 or higher across all eight courses in the FSM programme;
- Achieve an average score of 75 or higher in English for Academic Purposes and Introduction to Academic Communication; and
- Pass the MSA (Multiple Skills Assessment) and, if held, the PQA (Personal Qualities Assessment), as part of the JMP admissions process
- You are exempt from having to sit the UCAT ANZ.

If you are not successful in being offered a place in the JMP, you'll be considered for a place in an alternative degree of your choice at the University of Newcastle (subject to place availability and achieving the required average score).

Student residency status

In gaining a place as a fee-paying international student in the JMP, you should be aware that:

- It is a condition of continued enrolment in the programme that your visa status at the census date in each semester remains that of an international student.
- Conversion to permanent resident status will result in you losing your status as a fee-paying international student.

Accommodation

Newcastle is one of Australia's most affordable cities to live and study. You can choose from different on-campus residences located at Newcastle Callaghan campus or seek off-campus accommodation (for example, share houses, studios and apartments). If you prefer a local, supportive experience, you could also choose to stay at a homestay. We can help connect you to accommodation contact points to make your search easier. Visit the [college website for more information](#).

Student life

Our FSM classes are held in NUspace at our city campus, a short walk away from the stunning beaches, main shopping precinct and entertainment in Newcastle. From day one, you'll enjoy access to safe, friendly and secure campuses at the University of Newcastle, with a range of innovative facilities for you to make the most of your study experience.

Programme structure

You'll study eight core courses in this programme:

- English for Academic Purposes
- Introduction to Academic Communication
- IT for Academic Studies
- Australian Studies
- Biology
- Chemistry
- Human Biology
- Introductory Mathematics

Progression requirements

To successfully progress to Year 1 of the JMP at the University of Newcastle (Callaghan campus), you'll need to:



You'll learn from worldclass educators and interact with local and international students and experience the Australian culture and way of life. You'll also have access to over 150 clubs and societies, free career counselling, drop-in sessions and academic workshops.

The University of Newcastle College of International Education (CIE) is the official on-campus pathway provider to the University of Newcastle. Upon successful completion of programmes at the College, you can gain guaranteed entry into packaged university degrees at the University of Newcastle, a university ranked in the world's top 200 (QS World University Rankings, 2023), and top 200 for medicine (QS World University Rankings by Subject 2024).

How to apply

Applications should be made through Study Options, the University of Newcastle's representative in the UK. Please contact **Sarah Nash at Study Options** to discuss and plan your application.

The application form is available from Sarah; please request a copy from Sarah@studyoptions.com. Applications should be emailed to Study Options at the same address.

Study Option is a free application and advice service for students applying to Australian and New Zealand medical schools. Study Options is funded by universities in Australia and New Zealand to provide support with the application process on their behalf.



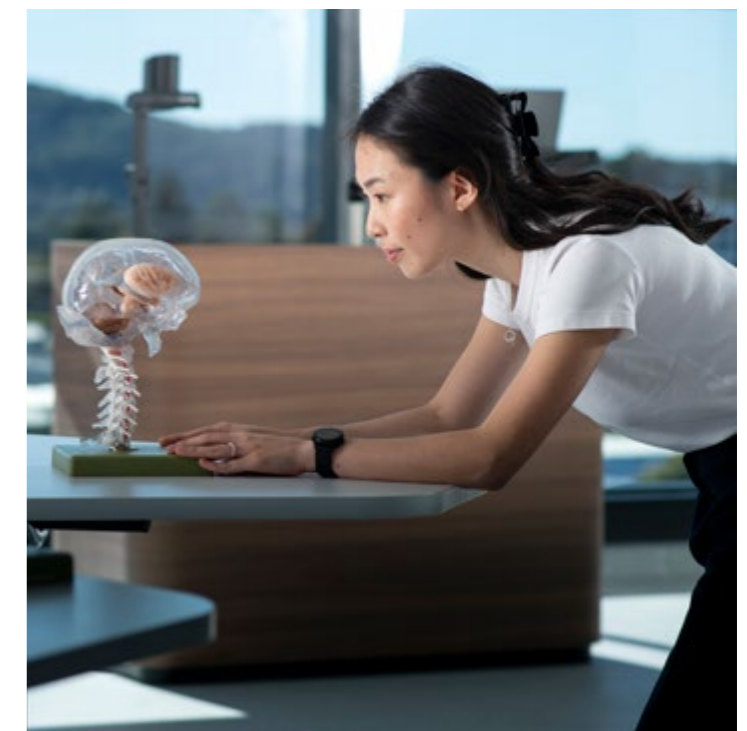
A student's experience: Teola Tadiwanashe Makumbe

Teola is studying the Foundation Studies in Medicine and plans to progress to the University of Newcastle to complete her medical degree. In this video, she gives us a tour of campus and introduces us to some of her favourite spots in Newcastle.

<https://www.youtube.com/watch?v=Za-SBHlvCEM>

Entry requirements and key facts

- **Duration:** 12 months
- **Intakes:** February
- **Campus location:** Newcastle, New South Wales
- **Tuition fee (2024):** A\$37,400 (additional fees will apply)
- **Academic entry scores (UK)**
 - GCE A-Level: Minimum B average from the best of 3 A-levels where A* is worth 6 points, A is worth 5 points, B is worth 4 and so on.
 - International Baccalaureate – completed IB with minimum score of 24 points.
- **English entry requirements**
 - You must meet English entry requirements of IELTS 6.0 overall (all bands 5.5 or above) or equivalent.
 - **Visit the College website** for more details on the English entry requirements and the accepted English tests for this programme.





studyoptions
Study in Australia or New Zealand

(+44) 117 911 5610
mail@studyoptions.com
www.studyoptions.com/contact

Study Options is a free application and advice service for students applying to Australian and New Zealand medical schools